

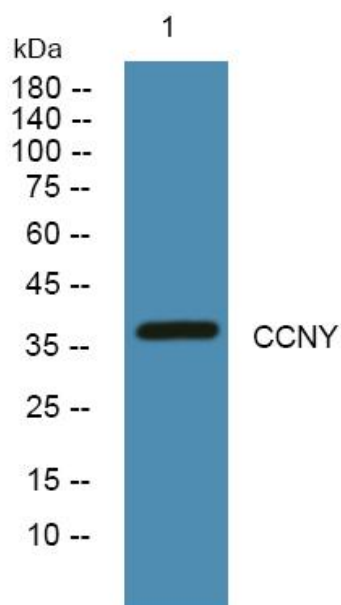


CCNY Polyclonal Antibody

Catalog No	YP-Ab-06436
Isotype	IgG
Reactivity	Human;Mouse
Applications	WB;ELISA
Gene Name	CCNY C10orf9 CBCP1 CFP1
Protein Name	Cyclin-Y (Cyc-Y) (Cyclin box protein 1) (Cyclin fold protein 1) (cyclin-X)
Immunogen	Synthesized peptide derived from human protein . at AA range: 270-350
Specificity	CCNY Polyclonal Antibody detects endogenous levels of protein.
Formulation	Liquid in PBS containing 50% glycerol, and 0.02% sodium azide.
Source	Polyclonal, Rabbit,IgG
Purification	The antibody was affinity-purified from rabbit antiserum by affinity-chromatography using epitope-specific immunogen.
Dilution	WB 1:500-2000 ELISA 1:5000-20000
Concentration	1 mg/ml
Purity	≥90%
Storage Stability	-20°C/1 year
Synonyms	
Observed Band	37kD
Cell Pathway	Cell membrane ; Lipid-anchor ; Cytoplasmic side .; [Isoform 3]: Nucleus.
Tissue Specificity	Widely expressed.
Function	similarity:Belongs to the cyclin family. Cyclin Y subfamily.,similarity:Contains 1 cyclin N-terminal domain.,
Background	Cyclins, such as CCNY, control cell division cycles and regulate cyclin-dependent kinases (e.g., CDC2; MIM 116940) (Li et al., 2009 [PubMed 18060517]).[supplied by OMIM, May 2009],
matters needing attention	Avoid repeated freezing and thawing!
Usage suggestions	This product can be used in immunological reaction related experiments. For more information, please consult technical personnel.



Products Images



Western blot analysis of lysates from U2OS cells, primary antibody was diluted at 1:1000, 4° over night