



# MAGAB Polyclonal Antibody

|                           |   |
|---------------------------|---|
| <b>Catalog No</b>         | YP-Ab-06470   |
| <b>Isotype</b>            | IgG   |
| <b>Reactivity</b>         | Human;Rat;Mouse;  |
| <b>Applications</b>       | WB;ELISA  |
| <b>Gene Name</b>          | MAGEA11 MAGE11  |
| <b>Protein Name</b>       | Melanoma-associated antigen 11 (Cancer/testis antigen 1.11) (CT1.11) (MAGE-11 antigen)  |
| <b>Immunogen</b>          | Synthesized peptide derived from human protein . at AA range: 30-110  |
| <b>Specificity</b>        | MAGAB Polyclonal Antibody detects endogenous levels of protein.   |
| <b>Formulation</b>        | Liquid in PBS containing 50% glycerol, and 0.02% sodium azide.  |
| <b>Source</b>             | Polyclonal, Rabbit,IgG  |
| <b>Purification</b>       | The antibody was affinity-purified from rabbit antiserum by affinity-chromatography using epitope-specific immunogen.   |
| <b>Dilution</b>           | WB 1:500-2000 ELISA 1:5000-20000  |
| <b>Concentration</b>      | 1 mg/ml   |
| <b>Purity</b>             | ≥90%  |
| <b>Storage Stability</b>  | -20°C/1 year  |
| <b>Synonyms</b>           |   |
| <b>Observed Band</b>      | 47kD  |
| <b>Cell Pathway</b>       | Nucleus . Cytoplasm .   |
| <b>Tissue Specificity</b> | Expressed in tumors of several types, such as melanoma, head and neck squamous cell carcinoma, lung carcinoma and breast carcinoma. Expressed in testis, ovary, prostate, cancerous prostate, breast and adrenal tissue.  |
| <b>Function</b>           | function:Acts as androgen receptor co-regulator that increases androgen receptor activity by modulating the receptors interdomain interaction. May play a role in embryonal development and tumor transformation or aspects of tumor progression.,similarity:Contains 1 MAGE domain.,tissue specificity:Expressed in tumors of several types, such as melanoma, head and neck squamous cell carcinoma, lung carcinoma and breast carcinoma. Expressed in testis, ovary, prostate, cancerous prostate, breast and adrenal tissue.,         |
| <b>Background</b>         | MAGE family member A11(MAGEA11) Homo sapiens This gene is a member of the MAGEA gene family. The members of this family encode proteins with 50 to 80% sequence identity to each other. The promoters and first exons of the MAGEA genes show considerable variability, suggesting that the existence of this gene family enables the same function to be expressed under different transcriptional controls. The MAGEA genes are clustered at chromosomal location Xq28. They have been implicated in some hereditary disorders, such as |



dyskeratosis congenita. Two transcript variants encoding different isoforms have been found for this gene. [provided by RefSeq, Jul 2008],

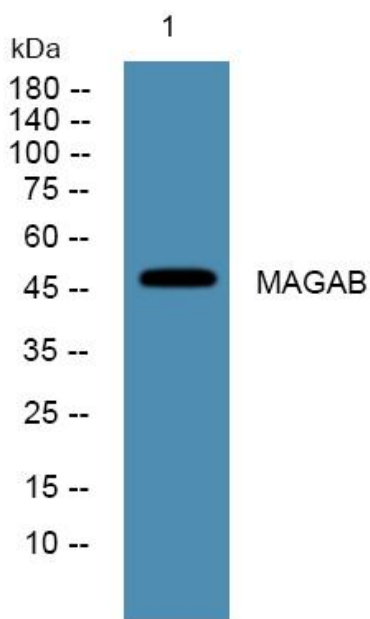
**matters needing attention**

Avoid repeated freezing and thawing!

**Usage suggestions**

This product can be used in immunological reaction related experiments. For more information, please consult technical personnel.

**Products Images**



Western blot analysis of lysates from HCT116 cells, primary antibody was diluted at 1:1000, 4° over night