

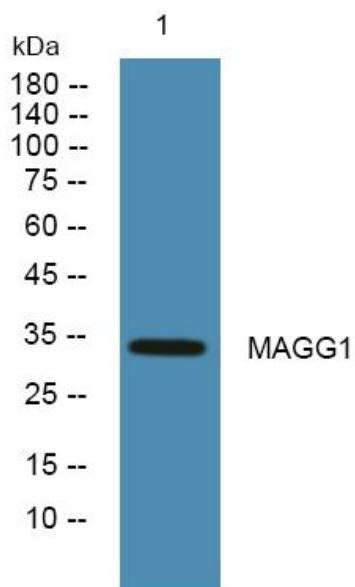


MAGG1 Polyclonal Antibody

Catalog No	YP-Ab-06481
Isotype	IgG
Reactivity	Human;Mouse
Applications	WB;ELISA
Gene Name	NDNL2 HCA4 MAGEG1
Protein Name	Melanoma-associated antigen G1 (Hepatocellular carcinoma-associated protein 4) (MAGE-G1 antigen) (Necdin-like protein 2)
Immunogen	Synthesized peptide derived from human protein . at AA range: 110-190
Specificity	MAGG1 Polyclonal Antibody detects endogenous levels of protein.
Formulation	Liquid in PBS containing 50% glycerol, and 0.02% sodium azide.
Source	Polyclonal, Rabbit,IgG
Purification	The antibody was affinity-purified from rabbit antiserum by affinity-chromatography using epitope-specific immunogen.
Dilution	WB 1:500-2000 ELISA 1:5000-20000
Concentration	1 mg/ml
Purity	≥90%
Storage Stability	-20°C/1 year
Synonyms	
Observed Band	33kD
Cell Pathway	Cytoplasm . Nucleus . Chromosome, telomere .
Tissue Specificity	Ubiquitous.
Function	function:Growth suppressor that facilitates the entry of the cell into cell cycle arrest.,PTM:Phosphorylated upon DNA damage, probably by ATM or ATR.,similarity:Contains 1 MAGE domain.,subunit:Binds the C-terminus of E2F1 and NGFR.,tissue specificity:Ubiquitous.,
Background	The protein encoded by this gene is part of the SMC5-6 chromatin reorganizing complex and is a member of the MAGE superfamily. This is an intronless gene. [provided by RefSeq, May 2011],
matters needing attention	Avoid repeated freezing and thawing!
Usage suggestions	This product can be used in immunological reaction related experiments. For more information, please consult technical personnel.



Products Images



Western blot analysis of lysates from DU145 cells,
primary antibody was diluted at 1:1000, 4° over night