

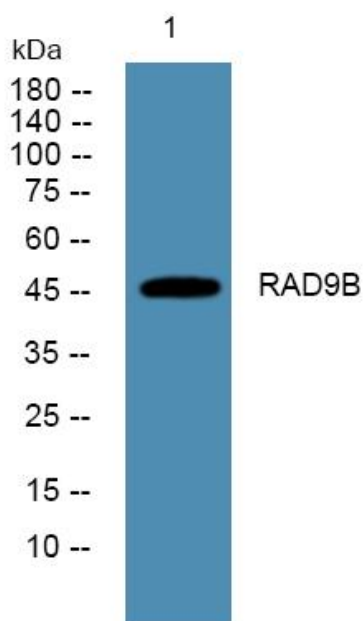


RAD9B Polyclonal Antibody

Catalog No	YP-Ab-06486
Isotype	IgG
Reactivity	Human;Rat;Mouse;
Applications	WB;ELISA
Gene Name	RAD9B
Protein Name	Cell cycle checkpoint control protein RAD9B (DNA repair exonuclease rad9 homolog B) (hRAD9B)
Immunogen	Synthesized peptide derived from part region of human protein
Specificity	RAD9B Polyclonal Antibody detects endogenous levels of protein.
Formulation	Liquid in PBS containing 50% glycerol, and 0.02% sodium azide.
Source	Polyclonal, Rabbit,IgG
Purification	The antibody was affinity-purified from rabbit antiserum by affinity-chromatography using epitope-specific immunogen.
Dilution	WB 1:500-2000 ELISA 1:5000-20000
Concentration	1 mg/ml
Purity	≥90%
Storage Stability	-20°C/1 year
Synonyms	
Observed Band	46kD
Cell Pathway	nucleoplasm,checkpoint clamp complex,
Tissue Specificity	Expressed in testis and skeletal muscle.
Function	similarity:Belongs to the rad9 family.,subunit:Interacts with HUS1, HUS1B, RAD1, RAD9A and RAD17.,tissue specificity:Expressed in testis and skeletal muscle.,
Background	similarity:Belongs to the rad9 family.,subunit:Interacts with HUS1, HUS1B, RAD1, RAD9A and RAD17.,tissue specificity:Expressed in testis and skeletal muscle.,
matters needing attention	Avoid repeated freezing and thawing!
Usage suggestions	This product can be used in immunological reaction related experiments. For more information, please consult technical personnel.



Products Images



Western blot analysis of lysates from PC12 cells,
primary antibody was diluted at 1:1000, 4° over night