

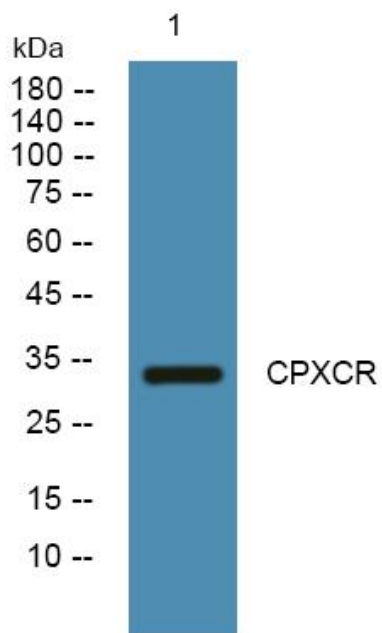


# CPXCR Polyclonal Antibody

<b>Catalog No</b>	YP-Ab-06534
<b>Isotype</b>	IgG
<b>Reactivity</b>	Human;Rat;Mouse;
<b>Applications</b>	WB;ELISA
<b>Gene Name</b>	CPXCR1
<b>Protein Name</b>	CPX chromosomal region candidate gene 1 protein (Cancer/testis antigen 77) (CT77)
<b>Immunogen</b>	Synthesized peptide derived from human protein . at AA range: 30-110
<b>Specificity</b>	CPXCR Polyclonal Antibody detects endogenous levels of protein.
<b>Formulation</b>	Liquid in PBS containing 50% glycerol, and 0.02% sodium azide.
<b>Source</b>	Polyclonal, Rabbit,IgG
<b>Purification</b>	The antibody was affinity-purified from rabbit antiserum by affinity-chromatography using epitope-specific immunogen.
<b>Dilution</b>	WB 1:500-2000 ELISA 1:5000-20000
<b>Concentration</b>	1 mg/ml
<b>Purity</b>	≥90%
<b>Storage Stability</b>	-20°C/1 year
<b>Synonyms</b>	
<b>Observed Band</b>	33kD
<b>Cell Pathway</b>	
<b>Tissue Specificity</b>	Expressed in a variety of fetal tissues.
<b>Function</b>	tissue specificity:Expressed in a variety of fetal tissues.,
<b>Background</b>	This gene is one of several genes identified in a region of the X chromosome associated with an X-linked cleft palate (CPX) disorder. The encoded protein contains a motif similar to a motif found in zinc-finger proteins. Mutation analysis of this gene has not revealed any mutation which causes the CPX disorder. Multiple alternatively spliced variants, encoding the same protein, have been identified. [provided by RefSeq, Sep 2011],
<b>matters needing attention</b>	Avoid repeated freezing and thawing!
<b>Usage suggestions</b>	This product can be used in immunological reaction related experiments. For more information, please consult technical personnel.



## Products Images



Western blot analysis of lysates from HCT116 cells, primary antibody was diluted at 1:1000, 4° over night