

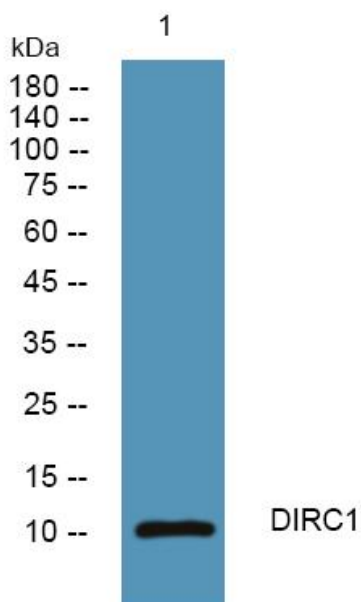


DIRC1 Polyclonal Antibody

Catalog No	YP-Ab-06543
Isotype	IgG
Reactivity	Human;Rat;Mouse;
Applications	WB;ELISA
Gene Name	DIRC1
Protein Name	Disrupted in renal carcinoma protein 1 (Disrupted in renal cancer protein)
Immunogen	Synthesized peptide derived from human protein . at AA range: 20-100
Specificity	DIRC1 Polyclonal Antibody detects endogenous levels of protein.
Formulation	Liquid in PBS containing 50% glycerol, and 0.02% sodium azide.
Source	Polyclonal, Rabbit,IgG
Purification	The antibody was affinity-purified from rabbit antiserum by affinity-chromatography using epitope-specific immunogen.
Dilution	WB 1:500-2000 ELISA 1:5000-20000
Concentration	1 mg/ml
Purity	≥90%
Storage Stability	-20°C/1 year
Synonyms	
Observed Band	11kD
Cell Pathway	
Tissue Specificity	Expressed at low steady-state level in adult placenta, testis, ovary, prostate, fetal kidney, spleen and skeletal muscle.
Function	disease:A chromosomal aberration involving DIRC1 is found in familial renal cell carcinoma 1-related translocation t(2;3)(q33;q21) (RCC1).,tissue specificity:Expressed at low steady-state level in adult placenta, testis, ovary, prostate, fetal kidney, spleen and skeletal muscle.,
Background	This gene consists of two exons and encodes a 104aa protein. Disruption of this gene by translocation t(2;3)(q33;q21) is associated with familial clear cell renal cancer. [provided by RefSeq, Sep 2010],
matters needing attention	Avoid repeated freezing and thawing!
Usage suggestions	This product can be used in immunological reaction related experiments. For more information, please consult technical personnel.



Products Images



Western blot analysis of lysates from HCT116 cells, primary antibody was diluted at 1:1000, 4° over night