

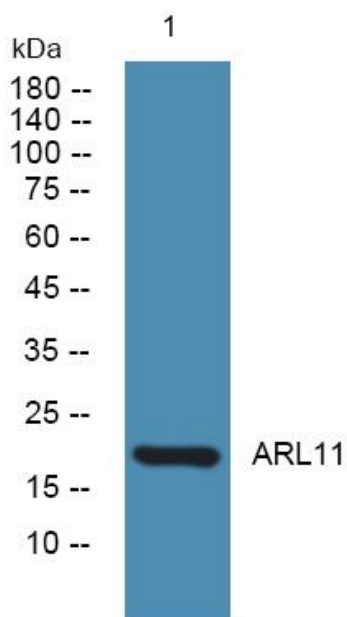


# ARL11 Polyclonal Antibody

<b>Catalog No</b>	YP-Ab-06544
<b>Isotype</b>	IgG
<b>Reactivity</b>	Human;Rat;Mouse;
<b>Applications</b>	WB;ELISA
<b>Gene Name</b>	ARL11 ARLTS1
<b>Protein Name</b>	ADP-ribosylation factor-like protein 11 (ADP-ribosylation factor-like tumor suppressor protein 1)
<b>Immunogen</b>	Synthesized peptide derived from human protein . at AA range: 140-220
<b>Specificity</b>	ARL11 Polyclonal Antibody detects endogenous levels of protein.
<b>Formulation</b>	Liquid in PBS containing 50% glycerol, and 0.02% sodium azide.
<b>Source</b>	Polyclonal, Rabbit,IgG
<b>Purification</b>	The antibody was affinity-purified from rabbit antiserum by affinity-chromatography using epitope-specific immunogen.
<b>Dilution</b>	WB 1:500-2000 ELISA 1:5000-20000
<b>Concentration</b>	1 mg/ml
<b>Purity</b>	≥90%
<b>Storage Stability</b>	-20°C/1 year
<b>Synonyms</b>	
<b>Observed Band</b>	21kD
<b>Cell Pathway</b>	intracellular,
<b>Tissue Specificity</b>	Expressed in lung and leukocytes.
<b>Function</b>	disease:Defects in ARL11 may be a cause of susceptibility to chronic lymphocytic leukemia (CLL) [MIM:151400].,function:May play a role in apoptosis. May act as a tumor suppressor.,similarity:Belongs to the small GTPase superfamily. Arf family.,tissue specificity:Expressed in lung and leukocytes.,
<b>Background</b>	This gene encodes a tumor suppressor related to the ADP-ribosylation factor (ARF) family of proteins. The encoded protein may play a role in apoptosis in a caspase-dependent manner. Polymorphisms in this gene have been associated with some familial cancers. [provided by RefSeq, May 2010],
<b>matters needing attention</b>	Avoid repeated freezing and thawing!
<b>Usage suggestions</b>	This product can be used in immunological reaction related experiments. For more information, please consult technical personnel.



## Products Images



Western blot analysis of lysates from K562 cells,  
primary antibody was diluted at 1:1000, 4° over night