



# DUX5 Polyclonal Antibody

|                           |   |
|---------------------------|---|
| <b>Catalog No</b>         | YP-Ab-06550   |
| <b>Isotype</b>            | IgG   |
| <b>Reactivity</b>         | Human;Rat;Mouse;  |
| <b>Applications</b>       | WB;ELISA  |
| <b>Gene Name</b>          | DUX5  |
| <b>Protein Name</b>       | Double homeobox protein 5   |
| <b>Immunogen</b>          | Synthesized peptide derived from human protein . at AA range: 10-90   |
| <b>Specificity</b>        | DUX5 Polyclonal Antibody detects endogenous levels of protein.  |
| <b>Formulation</b>        | Liquid in PBS containing 50% glycerol, and 0.02% sodium azide.  |
| <b>Source</b>             | Polyclonal, Rabbit,IgG  |
| <b>Purification</b>       | The antibody was affinity-purified from rabbit antiserum by affinity-chromatography using epitope-specific immunogen.   |
| <b>Dilution</b>           | WB 1:500-2000 ELISA 1:5000-20000  |
| <b>Concentration</b>      | 1 mg/ml   |
| <b>Purity</b>             | ≥90%  |
| <b>Storage Stability</b>  | -20°C/1 year  |
| <b>Synonyms</b>           |   |
| <b>Observed Band</b>      | 21kD  |
| <b>Cell Pathway</b>       | Nucleus .   |
| <b>Tissue Specificity</b> | Expressed in hepatoma Hep3B cells.  |
| <b>Function</b>           | developmental stage:Expressed in fetal tissue.,domain:Homeobox domain 2 confers nuclear targeting.,function:Probable transcription activator. Binds the P5 DNA element sequence 5'-GATCTGAGTCTAATTGAGAATTACTGTAC-3'.,miscellaneous:DUX genes are present in 3.3-kilobase elements, a tandem repeat family scattered in the genome found on the short arms of all acrocentric chromosomes as well as on several other chromosomes.,miscellaneous:DUX genes are present in 3.3-kilobase elements, a tandem repeat family scattered in the genome found on the short arms of all acrocentric chromosomes as well as on several other chromosomes. May be functional despite lack of introns and a poly(A) addition signal.,similarity:Belongs to the paired homeobox family.,similarity:Contains 2 homeobox DNA-binding domains.,subcellular location:Actively transported through the nuclear pore complex (NPC).,tissue specificity:Ex |
| <b>Background</b>         | double homeobox 5(DUX5) Homo sapiens The human genome contains hundreds of repeats of the 3.3-kb family in regions associated with  |



heterochromatin. The DUX gene family, including DUX5, resides within these 3.3-kb repeated elements (Beckers et al., 2001 [PubMed 11245978]). See DUX4 (MIM 606009).[supplied by OMIM, Mar 2008],

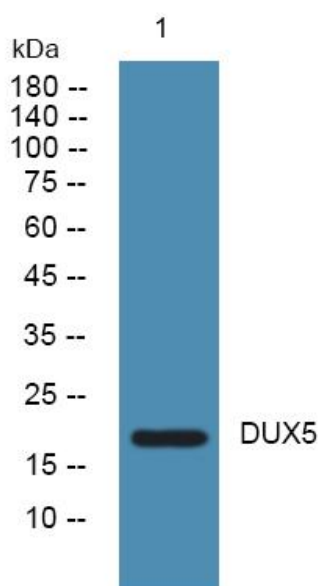
**matters needing attention**

Avoid repeated freezing and thawing!

**Usage suggestions**

This product can be used in immunological reaction related experiments. For more information, please consult technical personnel.

**Products Images**



Western blot analysis of lysates from U2OS cells, primary antibody was diluted at 1:1000, 4° over night