



# CITE2 Polyclonal Antibody

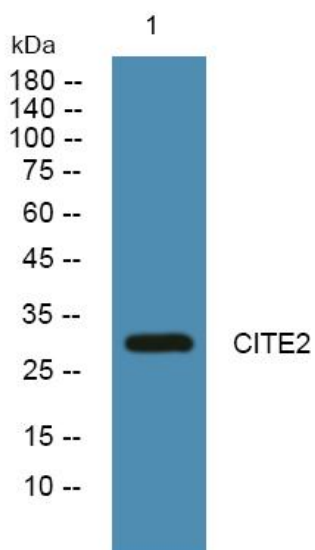
<b>Catalog No</b>	YP-Ab-06559
<b>Isotype</b>	IgG
<b>Reactivity</b>	Human;Mouse
<b>Applications</b>	WB;ELISA
<b>Gene Name</b>	CITED2 MRG1
<b>Protein Name</b>	Cbp/p300-interacting transactivator 2 (MSG-related protein 1) (MRG-1) (P35srj)
<b>Immunogen</b>	Synthesized peptide derived from human protein . at AA range: 190-270
<b>Specificity</b>	CITE2 Polyclonal Antibody detects endogenous levels of protein.
<b>Formulation</b>	Liquid in PBS containing 50% glycerol, and 0.02% sodium azide.
<b>Source</b>	Polyclonal, Rabbit,IgG
<b>Purification</b>	The antibody was affinity-purified from rabbit antiserum by affinity-chromatography using epitope-specific immunogen.
<b>Dilution</b>	WB 1:500-2000 ELISA 1:5000-20000
<b>Concentration</b>	1 mg/ml
<b>Purity</b>	≥90%
<b>Storage Stability</b>	-20°C/1 year
<b>Synonyms</b>	
<b>Observed Band</b>	29kD
<b>Cell Pathway</b>	Nucleus . Colocalizes with EP300 in dot-like structures.
<b>Tissue Specificity</b>	Pancreas,
<b>Function</b>	function:Interferes with the binding of transcription factors HIF-1a and STAT2 to p300/CBP.,induction:By hypoxia and deferoxamine.,similarity:Belongs to the CITED family.,subunit:Binds to the p300/CBP CH1 region.,
<b>Background</b>	Cbp/p300 interacting transactivator with Glu/Asp rich carboxy-terminal domain 2(CITED2) Homo sapiens The protein encoded by this gene inhibits transactivation of HIF1A-induced genes by competing with binding of hypoxia-inducible factor 1-alpha to p300-CH1. Mutations in this gene are a cause of cardiac septal defects. Alternatively spliced transcript variants encoding multiple isoforms have been observed for this gene. [provided by RefSeq, May 2012],
<b>matters needing attention</b>	Avoid repeated freezing and thawing!



### Usage suggestions

This product can be used in immunological reaction related experiments. For more information, please consult technical personnel.

## Products Images



Western blot analysis of lysates from SH-SY5Y cells, primary antibody was diluted at 1:1000, 4° over night