

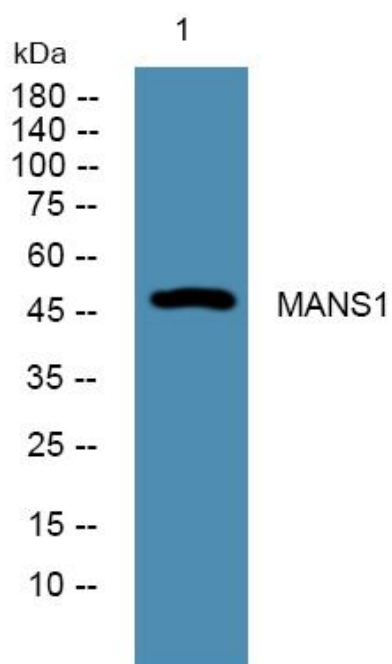


MAN51 Polyclonal Antibody

Catalog No	YP-Ab-06575
Isotype	IgG
Reactivity	Human;Rat;Mouse;
Applications	WB;ELISA
Gene Name	MAN5C1 LOH12CR3 UNQ316/PRO361
Protein Name	MAN5C domain-containing protein 1 (Loss of heterozygosity 12 chromosomal region 3 protein)
Immunogen	Synthesized peptide derived from human protein . at AA range: 310-390
Specificity	MAN51 Polyclonal Antibody detects endogenous levels of protein.
Formulation	Liquid in PBS containing 50% glycerol, and 0.02% sodium azide.
Source	Polyclonal, Rabbit,IgG
Purification	The antibody was affinity-purified from rabbit antiserum by affinity-chromatography using epitope-specific immunogen.
Dilution	WB 1:500-2000 ELISA 1:5000-20000
Concentration	1 mg/ml
Purity	≥90%
Storage Stability	-20°C/1 year
Synonyms	
Observed Band	47kD
Cell Pathway	Membrane ; Single-pass type I membrane protein .
Tissue Specificity	Widely expressed.
Function	similarity:Contains 1 MAN5C domain.,tissue specificity:Widely expressed.,
Background	similarity:Contains 1 MAN5C domain.,tissue specificity:Widely expressed.,
matters needing attention	Avoid repeated freezing and thawing!
Usage suggestions	This product can be used in immunological reaction related experiments. For more information, please consult technical personnel.



Products Images



Western blot analysis of lysates from DU145 cells, primary antibody was diluted at 1:1000, 4° over night