



STAP2 Polyclonal Antibody

Catalog No	YP-Ab-06586
Isotype	IgG
Reactivity	Human;Rat;Mouse;
Applications	WB;ELISA
Gene Name	STAP2 BKS
Protein Name	Signal-transducing adaptor protein 2 (STAP-2) (Breast tumor kinase substrate) (BRK substrate)
Immunogen	Synthesized peptide derived from part region of human protein
Specificity	STAP2 Polyclonal Antibody detects endogenous levels of protein.
Formulation	Liquid in PBS containing 50% glycerol, and 0.02% sodium azide.
Source	Polyclonal, Rabbit,IgG
Purification	The antibody was affinity-purified from rabbit antiserum by affinity-chromatography using epitope-specific immunogen.
Dilution	WB 1:500-2000 ELISA 1:5000-20000
Concentration	1 mg/ml
Purity	≥90%
Storage Stability	-20°C/1 year
Synonyms	
Observed Band	44kD
Cell Pathway	Cytoplasm .
Tissue Specificity	Widely expressed.
Function	function:Substrate of protein kinase PTK6. May play a regulatory role in the acute-phase response in systemic inflammation and may modulate STAT3 activity.,PTM:Phosphorylated on tyrosine. Tyr-250 may be important for interaction with kinases. Tyr-22 and Tyr-322 appears to be phosphorylated by SRC.,sequence caution:Alu insert from position 358 to 403.,similarity:Contains 1 PH domain.,similarity:Contains 1 SH2 domain.,subunit:Interacts with PTK6 and CSF1R.,tissue specificity:Widely expressed.,
Background	This gene encodes the substrate of breast tumor kinase, an Src-type non-receptor tyrosine kinase. The encoded protein possesses domains and several tyrosine phosphorylation sites characteristic of adaptor proteins that mediate the interactions linking proteins involved in signal transduction pathways. Alternative splicing results in multiple transcript variants. [provided by RefSeq, Jul 2008],



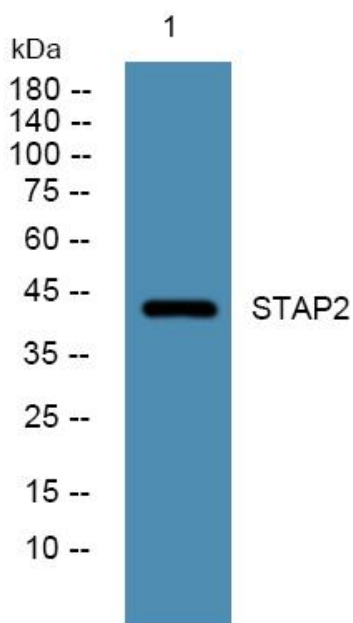
matters needing attention

Avoid repeated freezing and thawing!

Usage suggestions

This product can be used in immunological reaction related experiments. For more information, please consult technical personnel.

Products Images



Western blot analysis of lysates from SH-SY5Y cells, primary antibody was diluted at 1:1000, 4° over night