



TNF18 Polyclonal Antibody

Catalog No	YP-Ab-06590
Isotype	IgG
Reactivity	Human;Rat;Mouse;
Applications	WB;ELISA
Gene Name	TNFSF18 AITRL GITRL TL6 UNQ149/PRO175
Protein Name	Tumor necrosis factor ligand superfamily member 18 (Activation-inducible TNF-related ligand) (AITRL) (Glucocorticoid-induced TNF-related ligand) (hGITRL)
Immunogen	Synthesized peptide derived from part region of human protein AA range: 101-150
Specificity	TNF18 Polyclonal Antibody detects endogenous levels of protein.
Formulation	Liquid in PBS containing 50% glycerol, and 0.02% sodium azide.
Source	Polyclonal, Rabbit,IgG
Purification	The antibody was affinity-purified from rabbit antiserum by affinity-chromatography using epitope-specific immunogen.
Dilution	WB 1:500-2000 ELISA 1:5000-20000
Concentration	1 mg/ml
Purity	≥90%
Storage Stability	-20°C/1 year
Synonyms	
Observed Band	21kD
Cell Pathway	Cell membrane ; Single-pass type II membrane protein .
Tissue Specificity	Expressed at high levels in the small intestine, ovary, testis, kidney and endothelial cells.
Function	function:Cytokine that binds to TNFRSF18/AITR/GITR. Important for interactions between activated T-lymphocytes and endothelial cells and may modulate T-lymphocyte survival in peripheral tissues.,induction:Up-regulated after stimulation by lipopolysaccharides.,similarity:Belongs to the tumor necrosis factor family.,subunit:Homotrimer .,tissue specificity:Expressed at high levels in the small intestine, ovary, testis, kidney and endothelial cells.,
Background	The protein encoded by this gene is a cytokine that belongs to the tumor necrosis factor (TNF) ligand family. This cytokine is a ligand for receptor TNFRSF18/AITR/GITR. It has been shown to modulate T lymphocyte survival in peripheral tissues. This cytokine is also found to be expressed in endothelial cells, and is thought to be important for interaction between T lymphocytes and endothelial cells. [provided by RefSeq, Jul 2008],



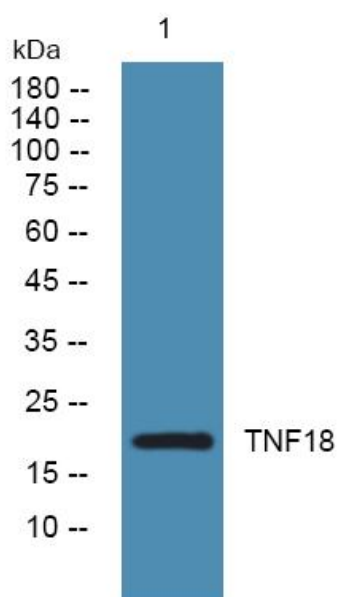
matters needing attention

Avoid repeated freezing and thawing!

Usage suggestions

This product can be used in immunological reaction related experiments. For more information, please consult technical personnel.

Products Images



Western blot analysis of lysates from KB cells, primary antibody was diluted at 1:1000, 4°over night