

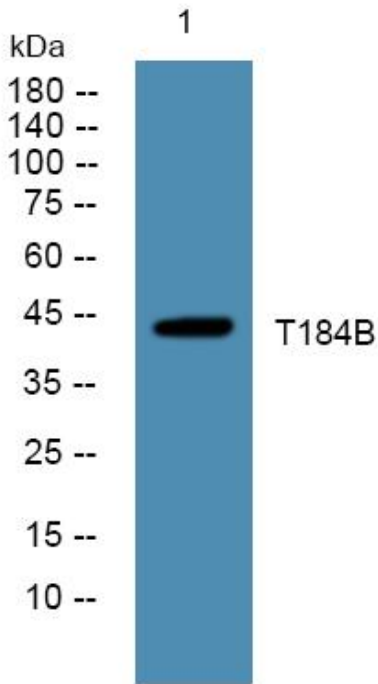


T184B Polyclonal Antibody

Catalog No	YP-Ab-06592
Isotype	IgG
Reactivity	Human;Mouse
Applications	WB;ELISA
Gene Name	TMEM184B C22orf5 PSEC0108
Protein Name	Transmembrane protein 184B (Putative MAPK-activating protein FM08)
Immunogen	Synthesized peptide derived from part region of human protein
Specificity	T184B Polyclonal Antibody detects endogenous levels of protein.
Formulation	Liquid in PBS containing 50% glycerol, and 0.02% sodium azide.
Source	Polyclonal, Rabbit,IgG
Purification	The antibody was affinity-purified from rabbit antiserum by affinity-chromatography using epitope-specific immunogen.
Dilution	WB 1:500-2000 ELISA 1:5000-20000
Concentration	1 mg/ml
Purity	≥90%
Storage Stability	-20°C/1 year
Synonyms	
Observed Band	44kD
Cell Pathway	Membrane ; Multi-pass membrane protein .
Tissue Specificity	Amygdala,Epithelium,Lung fibroblast,Pancreas,Teratocarcinoma,Uterine endoth
Function	function:May activate the MAP kinase signaling pathway.,similarity:Belongs to the UPF0206 family.,
Background	function:May activate the MAP kinase signaling pathway.,similarity:Belongs to the UPF0206 family.,
matters needing attention	Avoid repeated freezing and thawing!
Usage suggestions	This product can be used in immunological reaction related experiments. For more information, please consult technical personnel.



Products Images



Western blot analysis of lysates from K562 cells,
primary antibody was diluted at 1:1000, 4° over night