



CCBE1 Polyclonal Antibody

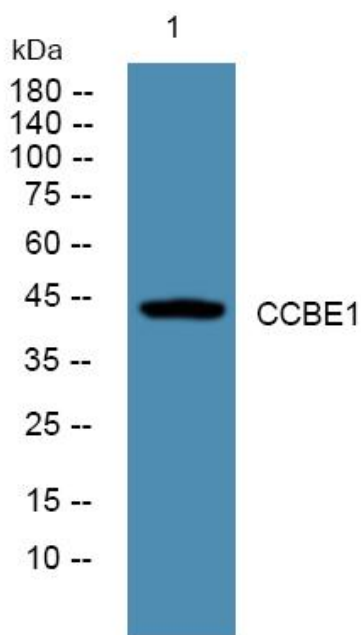
Catalog No	YP-Ab-06597
Isotype	IgG
Reactivity	Human;Rat;Mouse;
Applications	WB;ELISA
Gene Name	CCBE1 KIAA1983 UNQ1921/PRO4395
Protein Name	Collagen and calcium-binding EGF domain-containing protein 1 (Full of fluid protein homolog)
Immunogen	Synthesized peptide derived from human protein . at AA range: 120-200
Specificity	CCBE1 Polyclonal Antibody detects endogenous levels of protein.
Formulation	Liquid in PBS containing 50% glycerol, and 0.02% sodium azide.
Source	Polyclonal, Rabbit,IgG
Purification	The antibody was affinity-purified from rabbit antiserum by affinity-chromatography using epitope-specific immunogen.
Dilution	WB 1:500-2000 ELISA 1:5000-20000
Concentration	1 mg/ml
Purity	≥90%
Storage Stability	-20°C/1 year
Synonyms	
Observed Band	44kD
Cell Pathway	Secreted .
Tissue Specificity	Not expressed in blood or lymphatic endothelial cells.
Function	function:Required for lymphangioblast budding and angiogenic sprouting from venous endothelium during embryogenesis.,similarity:Belongs to the CCBE1 family.,similarity:Contains 1 EGF-like domain.,similarity:Contains 2 collagen-like domains.,tissue specificity:Not expressed in blood or lymphatic endothelial cells.,
Background	This gene is thought to function in extracellular matrix remodeling and migration. It is predominantly expressed in the ovary, but down regulated in ovarian cancer cell lines and primary carcinomas, suggesting its role as a tumour suppressor. Mutations in this gene have been associated with Hennekam lymphangiectasia-lymphedema syndrome, a generalized lymphatic dysplasia in humans. [provided by RefSeq, Mar 2010],
matters needing attention	Avoid repeated freezing and thawing!



Usage suggestions

This product can be used in immunological reaction related experiments. For more information, please consult technical personnel.

Products Images



Western blot analysis of lysates from A431 cells, primary antibody was diluted at 1:1000, 4° over night