



# IL36G Polyclonal Antibody

<b>Catalog No</b>	YP-Ab-06632
<b>Isotype</b>	IgG
<b>Reactivity</b>	Human;Rat;Mouse;
<b>Applications</b>	WB;ELISA
<b>Gene Name</b>	IL36G IL1E IL1F9 IL1H1 IL1RP2 UNQ2456/PRO5737
<b>Protein Name</b>	Interleukin-36 gamma (IL-1-related protein 2) (IL-1RP2) (Interleukin-1 epsilon) (IL-1 epsilon) (Interleukin-1 family member 9) (IL-1F9) (Interleukin-1 homolog 1) (IL-1H1)
<b>Immunogen</b>	Synthesized peptide derived from part region of human protein AA range: 31-80
<b>Specificity</b>	IL36G Polyclonal Antibody detects endogenous levels of protein.
<b>Formulation</b>	Liquid in PBS containing 50% glycerol, and 0.02% sodium azide.
<b>Source</b>	Polyclonal, Rabbit,IgG
<b>Purification</b>	The antibody was affinity-purified from rabbit antiserum by affinity-chromatography using epitope-specific immunogen.
<b>Dilution</b>	WB 1:500-2000 ELISA 1:5000-20000
<b>Concentration</b>	1 mg/ml
<b>Purity</b>	≥90%
<b>Storage Stability</b>	-20°C/1 year
<b>Synonyms</b>	
<b>Observed Band</b>	18kD
<b>Cell Pathway</b>	Cytoplasm . Secreted . The secretion is dependent on protein unfolding and facilitated by the cargo receptor TMED10; it results in protein translocation from the cytoplasm into the ERGIC (endoplasmic reticulum-Golgi intermediate compartment) followed by vesicle entry and secretion. .
<b>Tissue Specificity</b>	Highly expressed in tissues containing epithelial cells: skin, lung, stomach and esophagus. Expressed in bronchial epithelial. In skin is expressed only in keratinocytes but not in fibroblasts, endothelial cells or melanocytes. Up-regulated in lesional psoriasis skin. Expressed in monocyte-derived dendritic cells and M1 macrophages.
<b>Function</b>	function:Function as an agonist of NF-kappa B activation through the orphan IL-1-receptor-related protein 2. Could constitute part of an independent signaling system analogous to interleukin-1 alpha (IL-1A), beta (IL-1B) receptor agonist and interleukin-1 receptor type I (IL-1R1), that is present in epithelial barriers and takes part in local inflammatory response.,induction:By TNF-alpha and by IFN-gamma in keratinocytes.,online information:Interleukin-1 entry,similarity:Belongs to the IL-1 family.,tissue specificity:Highly expressed in tissues containing epithelial cells: skin, lung, stomach and esophagus. In skin is expressed only in keratinocytes but not in fibroblasts, endothelial cells or



melanocytes. Up-regulated in lesional psoriasis skin.,

### Background

The protein encoded by this gene is a member of the interleukin 1 cytokine family. The activity of this cytokine is mediated by interleukin 1 receptor-like 2 (IL1RL2/IL1R-rp2), and is specifically inhibited by interleukin 1 family, member 5 (IL1F5/IL-1 delta). Interferon-gamma, tumor necrosis factor-alpha and interleukin 1, beta (IL1B) are reported to stimulate the expression of this cytokine in keratinocytes. The expression of this cytokine in keratinocytes can also be induced by a contact hypersensitivity reaction or herpes simplex virus infection. This gene and eight other interleukin 1 family genes form a cytokine gene cluster on chromosome 2. Two alternatively spliced transcript variants encoding different isoforms have been found for this gene. [provided by RefSeq, Jun 2013],

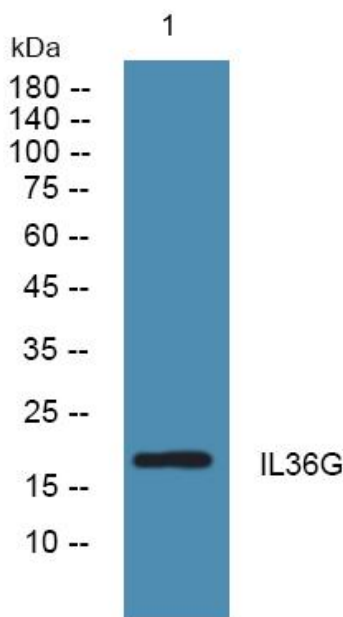
### matters needing attention

Avoid repeated freezing and thawing!

### Usage suggestions

This product can be used in immunological reaction related experiments. For more information, please consult technical personnel.

## Products Images



Western blot analysis of lysates from KB cells, primary antibody was diluted at 1:1000, 4° over night