



# JAML1 Polyclonal Antibody

<b>Catalog No</b>	YP-Ab-06642
<b>Isotype</b>	IgG
<b>Reactivity</b>	Human;Rat;Mouse;
<b>Applications</b>	WB;ELISA
<b>Gene Name</b>	AMICA1 JAML UNQ722/PRO1387
<b>Protein Name</b>	Junctional adhesion molecule-like (Adhesion molecule interacting with CXADR antigen 1) (Dendritic cell-specific protein CREA7-1)
<b>Immunogen</b>	Synthesized peptide derived from part region of human protein
<b>Specificity</b>	JAML1 Polyclonal Antibody detects endogenous levels of protein.
<b>Formulation</b>	Liquid in PBS containing 50% glycerol, and 0.02% sodium azide.
<b>Source</b>	Polyclonal, Rabbit,IgG
<b>Purification</b>	The antibody was affinity-purified from rabbit antiserum by affinity-chromatography using epitope-specific immunogen.
<b>Dilution</b>	WB 1:500-2000 ELISA 1:5000-20000
<b>Concentration</b>	1 mg/ml
<b>Purity</b>	≥90%
<b>Storage Stability</b>	-20°C/1 year
<b>Synonyms</b>	
<b>Observed Band</b>	43kD
<b>Cell Pathway</b>	Cell membrane ; Single-pass type I membrane protein . Cell junction . Localized at the plasma membrane and enriched in areas of cell-cell contacts (PubMed:12869515).
<b>Tissue Specificity</b>	Expression is restricted to the hematopoietic tissues with the exception of liver. Expressed in fetal liver, spleen and thymus. Preferentially expressed by mature leukocytes (at protein level).
<b>Function</b>	domain:The Ig-like V-type domain 2 mediates interaction with CXADR.,function:May function in transmigration of leukocytes through epithelial and endothelial tissues. Expressed at the plasma membrane of polymorphonuclear leukocytes, it mediates adhesive interactions with CXADR, a protein of the junctional complex of epithelial cells. Enhances myeloid leukemia cell adhesion to endothelial cells.,induction:Up-regulated upon retinoic acid, Me2SO and PMA treatment in differentiating myeloid leukemia cells.,similarity:Belongs to the immunoglobulin superfamily.,similarity:Contains 2 Ig-like V-type (immunoglobulin-like) domains.,subcellular location:Localized at the plasma membrane in areas of cell-cell contacts and at the cell surface of PMN.,subunit:Interacts with CXADR.,tissue specificity:Expression is restricted to the hematopoietic tissues with the exception of liver. Expressed in fetal liv



**Background**

domain:The Ig-like V-type domain 2 mediates interaction with CXADR.,function:May function in transmigration of leukocytes through epithelial and endothelial tissues. Expressed at the plasma membrane of polymorphonuclear leukocytes, it mediates adhesive interactions with CXADR, a protein of the junctional complex of epithelial cells. Enhances myeloid leukemia cell adhesion to endothelial cells.,induction:Up-regulated upon retinoic acid, Me2SO and PMA treatment in differentiating myeloid leukemia cells.,similarity:Belongs to the immunoglobulin superfamily.,similarity:Contains 2 Ig-like V-type (immunoglobulin-like) domains.,subcellular location:Localized at the plasma membrane in areas of cell-cell contacts and at the cell surface of PMN.,subunit:Interacts with CXADR.,tissue specificity:Expression is restricted to the hematopoietic tissues with the exception of liver. Expressed in fetal liver, spleen and thymus.,

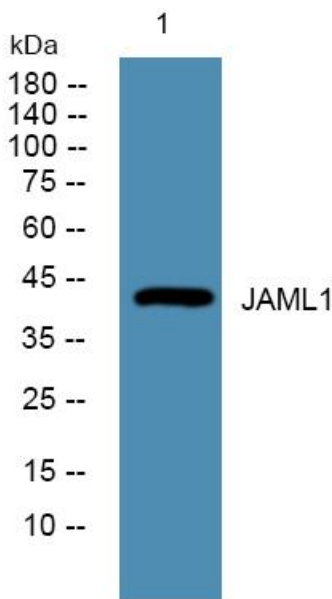
**matters needing attention**

Avoid repeated freezing and thawing!

**Usage suggestions**

This product can be used in immunological reaction related experiments. For more information, please consult technical personnel.

**Products Images**



Western blot analysis of lysates from U2OS cells, primary antibody was diluted at 1:1000, 4° over night