



# PDCD5 Polyclonal Antibody

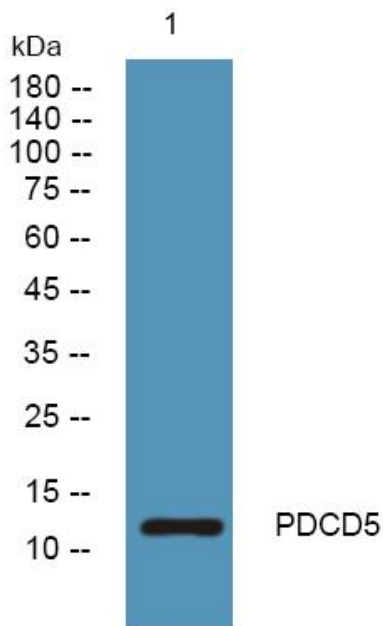
<b>Catalog No</b>	YP-Ab-06652
<b>Isotype</b>	IgG
<b>Reactivity</b>	Human;Mouse
<b>Applications</b>	WB;ELISA
<b>Gene Name</b>	PDCD5 TFAR19
<b>Protein Name</b>	Programmed cell death protein 5 (TF-1 cell apoptosis-related protein 19) (Protein TFAR19)
<b>Immunogen</b>	Synthesized peptide derived from part region of human protein
<b>Specificity</b>	PDCD5 Polyclonal Antibody detects endogenous levels of protein.
<b>Formulation</b>	Liquid in PBS containing 50% glycerol, and 0.02% sodium azide.
<b>Source</b>	Polyclonal, Rabbit,IgG
<b>Purification</b>	The antibody was affinity-purified from rabbit antiserum by affinity-chromatography using epitope-specific immunogen.
<b>Dilution</b>	WB 1:500-2000 ELISA 1:5000-20000
<b>Concentration</b>	1 mg/ml
<b>Purity</b>	≥90%
<b>Storage Stability</b>	-20°C/1 year
<b>Synonyms</b>	
<b>Observed Band</b>	13kD
<b>Cell Pathway</b>	nucleus,cytoplasm,cytosol,extracellular exosome,
<b>Tissue Specificity</b>	Widely expressed. Highest levels in heart, testis, kidney, pituitary gland, adrenal gland and placenta.
<b>Function</b>	developmental stage:Expression in fetal tissues is significantly lower than in adult tissues.,function:May function in the process of apoptosis.,induction:Activated in cells undergoing apoptosis.,similarity:Belongs to the PDCD5 family.,tissue specificity:Widely expressed. Highest levels in heart, testis, kidney, pituitary gland, adrenal gland and placenta.,
<b>Background</b>	This gene encodes a protein that is upregulated during apoptosis where it translocates rapidly from the cytoplasm to the nucleus. The encoded protein may be an important regulator of K(lysine) acetyltransferase 5 (a protein involved in transcription, DNA damage response and cell cycle control) by inhibiting its proteasome-dependent degradation. Pseudogenes have been identified on chromosomes 5 and 12 [provided by RefSeq, Dec 2010],
<b>matters needing attention</b>	Avoid repeated freezing and thawing!



**Usage suggestions**

This product can be used in immunological reaction related experiments. For more information, please consult technical personnel.

**Products Images**



Western blot analysis of lysates from DU145 cells, primary antibody was diluted at 1:1000, 4° over night