

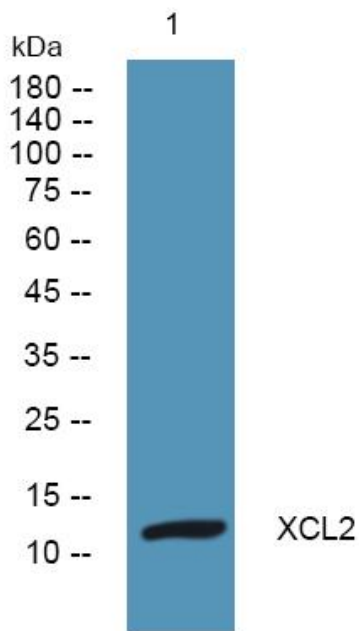


XCL2 Polyclonal Antibody

Catalog No	YP-Ab-06662
Isotype	IgG
Reactivity	Human;Rat;Mouse;
Applications	WB;ELISA
Gene Name	XCL2 SCYC2
Protein Name	Cytokine SCM-1 beta (C motif chemokine 2) (XC chemokine ligand 2)
Immunogen	Synthesized peptide derived from part region of human protein AA range: 1-50
Specificity	XCL2 Polyclonal Antibody detects endogenous levels of protein.
Formulation	Liquid in PBS containing 50% glycerol, and 0.02% sodium azide.
Source	Polyclonal, Rabbit,IgG
Purification	The antibody was affinity-purified from rabbit antiserum by affinity-chromatography using epitope-specific immunogen.
Dilution	WB 1:500-2000 ELISA 1:5000-20000
Concentration	1 mg/ml
Purity	≥90%
Storage Stability	-20°C/1 year
Synonyms	
Observed Band	12kD
Cell Pathway	Secreted.
Tissue Specificity	Blood,Placenta,
Function	function:Chemotactic activity for lymphocytes but not for monocytes or neutrophils.,online information:XCL2 entry,similarity:Belongs to the intercrine gamma family.,
Background	function:Chemotactic activity for lymphocytes but not for monocytes or neutrophils.,online information:XCL2 entry,similarity:Belongs to the intercrine gamma family.,
matters needing attention	Avoid repeated freezing and thawing!
Usage suggestions	This product can be used in immunological reaction related experiments. For more information, please consult technical personnel.



Products Images



Western blot analysis of lysates from K562 cells,
primary antibody was diluted at 1:1000, 4° over night