



CANT1 Polyclonal Antibody

Catalog No	YP-Ab-06684
Isotype	IgG
Reactivity	Human;Mouse
Applications	WB;ELISA
Gene Name	CANT1 SHAPY
Protein Name	Soluble calcium-activated nucleotidase 1 (SCAN-1) (EC 3.6.1.6) (Apyrase homolog) (Putative MAPK-activating protein PM09) (Putative NF-kappa-B-activating protein 107)
Immunogen	Synthesized peptide derived from part region of human protein
Specificity	CANT1 Polyclonal Antibody detects endogenous levels of protein.
Formulation	Liquid in PBS containing 50% glycerol, and 0.02% sodium azide.
Source	Polyclonal, Rabbit,IgG
Purification	The antibody was affinity-purified from rabbit antiserum by affinity-chromatography using epitope-specific immunogen.
Dilution	WB 1:500-2000 ELISA 1:5000-20000
Concentration	1 mg/ml
Purity	≥90%
Storage Stability	-20°C/1 year
Synonyms	
Observed Band	44kD
Cell Pathway	Endoplasmic reticulum membrane ; Single-pass type II membrane protein . Golgi apparatus, Golgi stack membrane ; Single-pass type II membrane protein . Cell membrane . Processed form: Secreted.
Tissue Specificity	Widely expressed.
Function	catalytic activity:A nucleoside diphosphate + H(2)O = a nucleotide + phosphate.,cofactor:Calcium.,function:Calcium-dependent nucleotidase with a preference for UDP. The order of activity with different substrates is UDP > GDP > UTP > GTP. Has very low activity towards ADP and even lower activity towards ATP. Does not hydrolyze AMP and GMP.,miscellaneous:Not inhibited by azide.,PTM:N-glycosylated.,similarity:Belongs to the apyrase family.,subcellular location:Processed form: Secreted.,subunit:Monomer.,tissue specificity:Widely expressed.,
Background	calcium activated nucleotidase 1(CANT1) Homo sapiens This protein encoded by this gene belongs to the apyrase family. It functions as a calcium-dependent nucleotidase with a preference for UDP. Mutations in this gene are associated with Desbuquois dysplasia with hand anomalies. Alternatively spliced transcript variants have been noted for this gene.[provided by



RefSeq, Mar 2010],

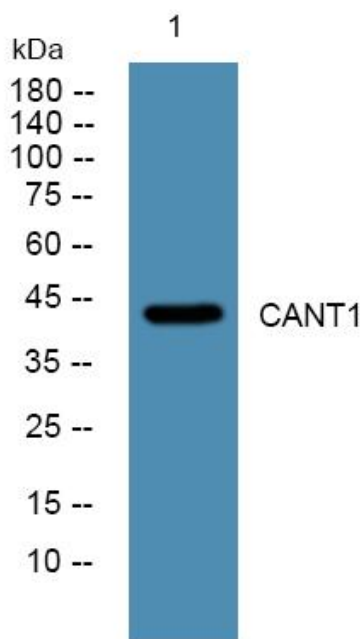
matters needing attention

Avoid repeated freezing and thawing!

Usage suggestions

This product can be used in immunological reaction related experiments. For more information, please consult technical personnel.

Products Images



Western blot analysis of lysates from SH-SY5Y cells, primary antibody was diluted at 1:1000, 4° over night