

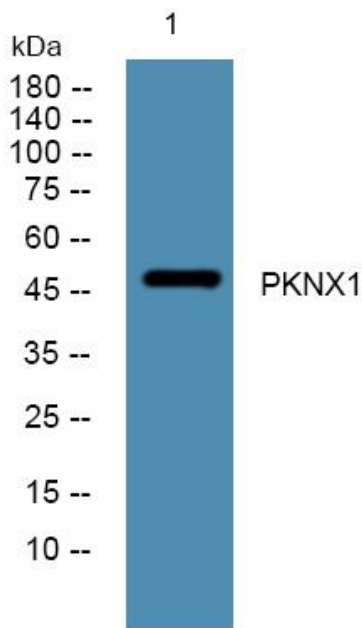


PKNX1 Polyclonal Antibody

Catalog No	YP-Ab-06697
Isotype	IgG
Reactivity	Human;Mouse
Applications	WB;ELISA
Gene Name	PKNOX1 PREP1
Protein Name	Homeobox protein PKNOX1 (Homeobox protein PREP-1) (PBX/knotted homeobox 1)
Immunogen	Synthesized peptide derived from part region of human protein
Specificity	PKNX1 Polyclonal Antibody detects endogenous levels of protein.
Formulation	Liquid in PBS containing 50% glycerol, and 0.02% sodium azide.
Source	Polyclonal, Rabbit,IgG
Purification	The antibody was affinity-purified from rabbit antiserum by affinity-chromatography using epitope-specific immunogen.
Dilution	WB 1:500-2000 ELISA 1:5000-20000
Concentration	1 mg/ml
Purity	≥90%
Storage Stability	-20°C/1 year
Synonyms	
Observed Band	47kD
Cell Pathway	Nucleus .
Tissue Specificity	Ubiquitous. Isoform 2 is expressed in all examined tissues except in bone marrow.
Function	similarity:Belongs to the TALE/MEIS homeobox family.,similarity:Contains 1 homeobox DNA-binding domain.,tissue specificity:Ubiquitous. Isoform 2 is expressed in all examined tissues except in bone marrow.,
Background	similarity:Belongs to the TALE/MEIS homeobox family.,similarity:Contains 1 homeobox DNA-binding domain.,tissue specificity:Ubiquitous. Isoform 2 is expressed in all examined tissues except in bone marrow.,
matters needing attention	Avoid repeated freezing and thawing!
Usage suggestions	This product can be used in immunological reaction related experiments. For more information, please consult technical personnel.



Products Images



Western blot analysis of lysates from SH-SY5Y cells, primary antibody was diluted at 1:1000, 4° over night