



# TSSK3 Polyclonal Antibody

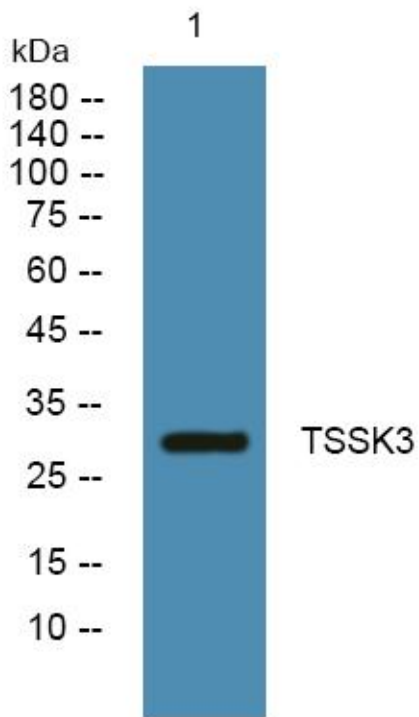
<b>Catalog No</b>	YP-Ab-06756
<b>Isotype</b>	IgG
<b>Reactivity</b>	Human;Mouse
<b>Applications</b>	WB;ELISA
<b>Gene Name</b>	TSSK3 SPOGA3 STK22C
<b>Protein Name</b>	Testis-specific serine/threonine-protein kinase 3 (TSK-3) (TSSK-3) (Testis-specific kinase 3) (EC 2.7.11.1) (Serine/threonine-protein kinase 22C)
<b>Immunogen</b>	Synthesized peptide derived from part region of human protein
<b>Specificity</b>	TSSK3 Polyclonal Antibody detects endogenous levels of protein.
<b>Formulation</b>	Liquid in PBS containing 50% glycerol, and 0.02% sodium azide.
<b>Source</b>	Polyclonal, Rabbit,IgG
<b>Purification</b>	The antibody was affinity-purified from rabbit antiserum by affinity-chromatography using epitope-specific immunogen.
<b>Dilution</b>	WB 1:500-2000 ELISA 1:5000-20000
<b>Concentration</b>	1 mg/ml
<b>Purity</b>	≥90%
<b>Storage Stability</b>	-20°C/1 year
<b>Synonyms</b>	
<b>Observed Band</b>	29kD
<b>Cell Pathway</b>	nucleus,cytoplasm,
<b>Tissue Specificity</b>	Brain,Fetal brain,Testis,
<b>Function</b>	catalytic activity:ATP + a protein = ADP + a phosphoprotein.,cofactor:Magnesium.,enzyme regulation:Activated by phosphorylation on Thr-168, potentially by autophosphorylation.,function:May be involved in a signaling pathway during male germ cell development or mature sperm function.,miscellaneous:The mouse homolog is Stk22d.,PTM:Autophosphorylated.,similarity:Belongs to the protein kinase superfamily. CAMK Ser/Thr protein kinase family.,similarity:Contains 1 protein kinase domain.,
<b>Background</b>	This gene encodes a kinase expressed exclusively in the testis that is thought to play a role in either germ cell differentiation or mature sperm function. [provided by RefSeq, Jul 2008],
<b>matters needing attention</b>	Avoid repeated freezing and thawing!



**Usage suggestions**

This product can be used in immunological reaction related experiments. For more information, please consult technical personnel.

**Products Images**



Western blot analysis of lysates from SH-SY5Y cells, primary antibody was diluted at 1:1000, 4° over night