



FOXF1 Polyclonal Antibody

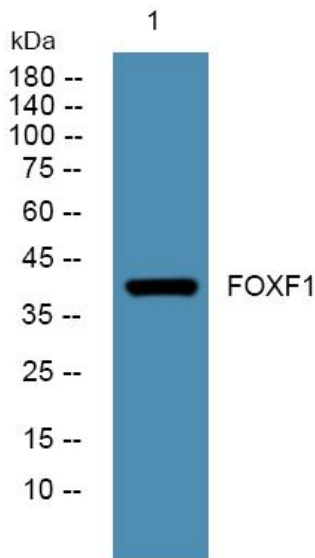
Catalog No	YP-Ab-06802
Isotype	IgG
Reactivity	Human;Mouse
Applications	WB;ELISA
Gene Name	FOXF1 FKHL5 FREAC1
Protein Name	Forkhead box protein F1 (Forkhead-related activator 1) (FREAC-1) (Forkhead-related protein FKHL5) (Forkhead-related transcription factor 1)
Immunogen	Synthesized peptide derived from part region of human protein
Specificity	FOXF1 Polyclonal Antibody detects endogenous levels of protein.
Formulation	Liquid in PBS containing 50% glycerol, and 0.02% sodium azide.
Source	Polyclonal, Rabbit,IgG
Purification	The antibody was affinity-purified from rabbit antiserum by affinity-chromatography using epitope-specific immunogen.
Dilution	WB 1:500-2000 ELISA 1:5000-20000
Concentration	1 mg/ml
Purity	≥90%
Storage Stability	-20°C/1 year
Synonyms	
Observed Band	41kD
Cell Pathway	Nucleus .
Tissue Specificity	Expressed in lung and placenta.
Function	caution:It is uncertain whether Met-1 or Met-26 is the initiator.,domain:Activation domains C-terminal of (and distinct from) the forkhead domains are necessary for transcriptional activation.,function:Probable transcription activator for a number of lung-specific genes.,similarity:Contains 1 fork-head DNA-binding domain.,tissue specificity:Lung and placenta.,
Background	This gene belongs to the forkhead family of transcription factors which is characterized by a distinct forkhead domain. The specific function of this gene has not yet been determined; however, it may play a role in the regulation of pulmonary genes as well as embryonic development. [provided by RefSeq, Jul 2008],
matters needing attention	Avoid repeated freezing and thawing!



Usage suggestions

This product can be used in immunological reaction related experiments. For more information, please consult technical personnel.

Products Images



Western blot analysis of lysates from KB cells, primary antibody was diluted at 1:1000, 4° over night