



# TICN2 Polyclonal Antibody

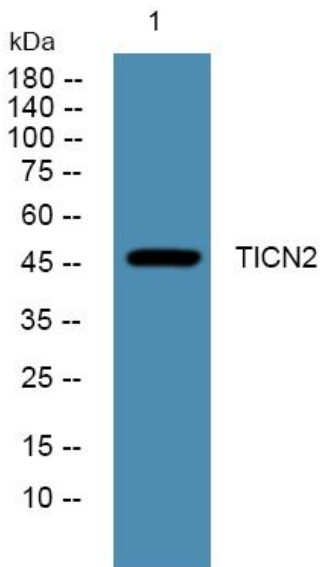
|                                  |   |
|----------------------------------|---|
| <b>Catalog No</b>                | YP-Ab-06828   |
| <b>Isotype</b>                   | IgG   |
| <b>Reactivity</b>                | Human;Mouse   |
| <b>Applications</b>              | WB;ELISA  |
| <b>Gene Name</b>                 | SPOCK2 KIAA0275 TICN2 UNQ269/PRO306   |
| <b>Protein Name</b>              | Testican-2 (SPARC/osteonectin, CWCV, and Kazal-like domains proteoglycan 2)   |
| <b>Immunogen</b>                 | Synthesized peptide derived from part region of human protein   |
| <b>Specificity</b>               | TICN2 Polyclonal Antibody detects endogenous levels of protein.   |
| <b>Formulation</b>               | Liquid in PBS containing 50% glycerol, and 0.02% sodium azide.  |
| <b>Source</b>                    | Polyclonal, Rabbit,IgG  |
| <b>Purification</b>              | The antibody was affinity-purified from rabbit antiserum by affinity-chromatography using epitope-specific immunogen.   |
| <b>Dilution</b>                  | WB 1:500-2000 ELISA 1:5000-20000  |
| <b>Concentration</b>             | 1 mg/ml   |
| <b>Purity</b>                    | ≥90%  |
| <b>Storage Stability</b>         | -20°C/1 year  |
| <b>Synonyms</b>                  |   |
| <b>Observed Band</b>             | 46kD  |
| <b>Cell Pathway</b>              | Secreted, extracellular space, extracellular matrix .   |
| <b>Tissue Specificity</b>        | Highly expressed in brain. Also found in lung and testis.   |
| <b>Function</b>                  | function:May participate in diverse steps of neurogenesis. Binds calcium.,PTM:Contains chondroitin sulfate and heparan sulfate O-linked oligosaccharides.,similarity:Contains 1 Kazal-like domain.,similarity:Contains 1 thyroglobulin type-1 domain.,tissue specificity:Highly expressed in brain. Also found in lung and testis.,   |
| <b>Background</b>                | This gene encodes a protein which binds with glycosaminoglycans to form part of the extracellular matrix. The protein contains thyroglobulin type-1, follistatin-like, and calcium-binding domains, and has glycosaminoglycan attachment sites in the acidic C-terminal region. Three alternatively spliced transcript variants that encode different protein isoforms have been described for this gene. [provided by RefSeq, Oct 2011], |
| <b>matters needing attention</b> | Avoid repeated freezing and thawing!  |



### Usage suggestions

This product can be used in immunological reaction related experiments. For more information, please consult technical personnel.

## Products Images



Western blot analysis of lysates from PC12 cells, primary antibody was diluted at 1:1000, 4° over night