



RALA Polyclonal Antibody

Catalog No	YP-Ab-06844
Isotype	IgG
Reactivity	Human;Rat;Mouse
Applications	WB;ELISA
Gene Name	RALA RAL
Protein Name	Ras-related protein Ral-A
Immunogen	Synthesized peptide derived from part region of human protein
Specificity	RALA Polyclonal Antibody detects endogenous levels of protein.
Formulation	Liquid in PBS containing 50% glycerol, and 0.02% sodium azide.
Source	Polyclonal, Rabbit,IgG
Purification	The antibody was affinity-purified from rabbit antiserum by affinity-chromatography using epitope-specific immunogen.
Dilution	WB 1:500-2000 ELISA 1:5000-20000
Concentration	1 mg/ml
Purity	≥90%
Storage Stability	-20°C/1 year
Synonyms	
Observed Band	22kD
Cell Pathway	Cell membrane ; Lipid-anchor ; Cytoplasmic side. Cleavage furrow . Midbody, Midbody ring . Mitochondrion . Predominantly at the cell surface in the absence of LPA. In the presence of LPA, colocalizes with LPAR1 and LPAR2 in endocytic vesicles (PubMed:19306925). May colocalize with CNTRL/centriolin at the midbody ring (PubMed:16213214). However, localization at the midbody at late cytokinesis was not confirmed (PubMed:18756269). Relocalizes to the mitochondrion during mitosis where it regulates mitochondrial fission (PubMed:21822277). .
Tissue Specificity	Eye,Lung,Platelet,
Function	similarity:Belongs to the small GTPase superfamily. Ras family.,subunit:Interacts with RALBP1 via its effector domain. Interacts with EXOC8 and EXOC2. EXOC2 and EXOC8 have overlapping binding sites and compete for RALA binding. Interacts with Clostridium exoenzyme C3. Interacts with RALGPS1.,
Background	RAS like proto-oncogene A(RALA) Homo sapiens The product of this gene belongs to the small GTPase superfamily, Ras family of proteins. GTP-binding proteins mediate the transmembrane signaling initiated by the occupancy of certain cell surface receptors. This gene encodes a low molecular mass ras-like GTP-binding protein that shares about 50% similarity with other ras proteins.



[provided by RefSeq, Jul 2008],

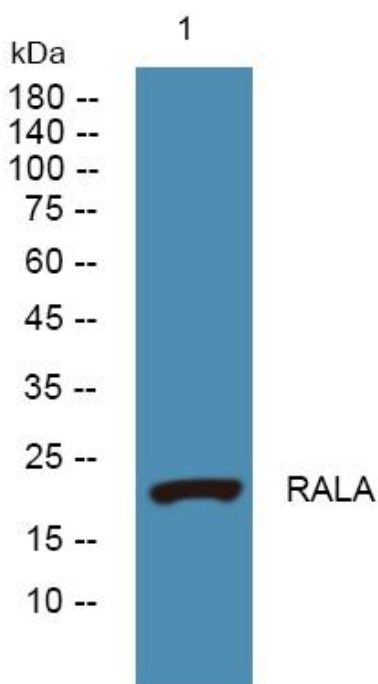
matters needing attention

Avoid repeated freezing and thawing!

Usage suggestions

This product can be used in immunological reaction related experiments. For more information, please consult technical personnel.

Products Images



Western blot analysis of lysates from K562 cells, primary antibody was diluted at 1:1000, 4° over night