



HBE Polyclonal Antibody

Catalog No	YP-Ab-06871
Isotype	IgG
Reactivity	Human;Rat;Mouse;
Applications	WB;ELISA
Gene Name	HBE1 HBE
Protein Name	Hemoglobin subunit epsilon (Epsilon-globin) (Hemoglobin epsilon chain)
Immunogen	Synthesized peptide derived from part region of human protein
Specificity	HBE Polyclonal Antibody detects endogenous levels of protein.
Formulation	Liquid in PBS containing 50% glycerol, and 0.02% sodium azide.
Source	Polyclonal, Rabbit,IgG
Purification	The antibody was affinity-purified from rabbit antiserum by affinity-chromatography using epitope-specific immunogen.
Dilution	WB 1:500-2000 ELISA 1:5000-20000
Concentration	1 mg/ml
Purity	≥90%
Storage Stability	-20°C/1 year
Synonyms	
Observed Band	16kD
Cell Pathway	cytosol,hemoglobin complex,blood microparticle,
Tissue Specificity	Red blood cells.
Function	function:The epsilon chain is a beta-type chain of early mammalian embryonic hemoglobin.,similarity:Belongs to the globin family.,subunit:Heterotetramer of two alpha chains and two epsilon chains in early embryonic hemoglobin Gower-2; two zeta chains and two epsilon chains in early embryonic hemoglobin Gower-1.,tissue specificity:Red blood cells.,
Background	The epsilon globin gene (HBE) is normally expressed in the embryonic yolk sac: two epsilon chains together with two zeta chains (an alpha-like globin) constitute the embryonic hemoglobin Hb Gower I; two epsilon chains together with two alpha chains form the embryonic Hb Gower II. Both of these embryonic hemoglobins are normally supplanted by fetal, and later, adult hemoglobin. The five beta-like globin genes are found within a 45 kb cluster on chromosome 11 in the following order: ε;γ - G-gamma - A-gamma - delta - beta-3; [provided by RefSeq, Jul 2008],



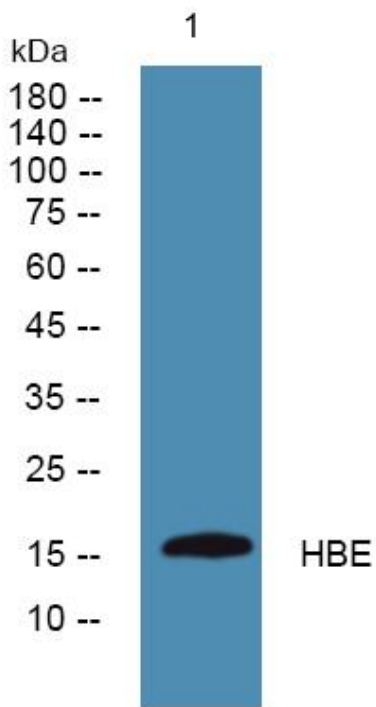
matters needing attention

Avoid repeated freezing and thawing!

Usage suggestions

This product can be used in immunological reaction related experiments. For more information, please consult technical personnel.

Products Images



Western blot analysis of lysates from A431 cells, primary antibody was diluted at 1:1000, 4° over night