



BAMBI Polyclonal Antibody

Catalog No	YP-Ab-06874
Isotype	IgG
Reactivity	Human;Mouse;Rat
Applications	WB;ELISA
Gene Name	BAMBI NMA
Protein Name	BMP and activin membrane-bound inhibitor homolog (Non-metastatic gene A protein) (Putative transmembrane protein NMA)
Immunogen	Synthesized peptide derived from part region of human protein
Specificity	BAMBI Polyclonal Antibody detects endogenous levels of protein.
Formulation	Liquid in PBS containing 50% glycerol, and 0.02% sodium azide.
Source	Polyclonal, Rabbit,IgG
Purification	The antibody was affinity-purified from rabbit antiserum by affinity-chromatography using epitope-specific immunogen.
Dilution	WB 1:500-2000 ELISA 1:5000-20000
Concentration	1 mg/ml
Purity	≥90%
Storage Stability	-20°C/1 year
Synonyms	
Observed Band	28kD
Cell Pathway	Membrane ; Single-pass type I membrane protein .
Tissue Specificity	High expression in kidney medulla, placenta and spleen; low in kidney cortex, liver, prostate and gut. Not expressed in normal skin, expression is high in melanocytes and in 3 out of 11 melanoma metastases tested.
Function	developmental stage:Expression in poorly metastatic human melanoma cell lines; no expression in highly metastatic human melanoma cell lines.,function:Negatively regulates TGF-beta signaling.,similarity:Belongs to the BAMBI family.,tissue specificity:High expression in kidney medulla, placenta and spleen; low in kidney cortex, liver, prostate and gut. Not expressed in normal skin, expression is high in melanocytes and in 3 out of 11 melanoma metastases tested.,
Background	BMP and activin membrane bound inhibitor(BAMBI) Homo sapiens This gene encodes a transmembrane glycoprotein related to the type I receptors of the transforming growth factor-beta (TGF-beta) family, whose members play important roles in signal transduction in many developmental and pathological processes. The encoded protein however is a pseudoreceptor, lacking an intracellular serine/threonine kinase domain required for signaling. Similar proteins in frog, mouse and zebrafish function as negative regulators of TGF-beta,



which has led to the suggestion that the encoded protein may function to limit the signaling range of the TGF-beta family during early embryogenesis. [provided by RefSeq, Jul 2008],

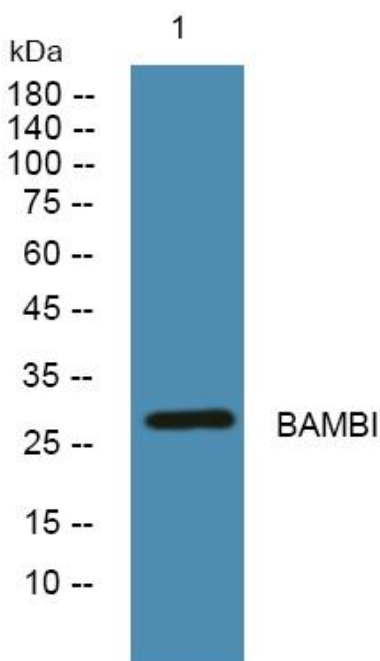
matters needing attention

Avoid repeated freezing and thawing!

Usage suggestions

This product can be used in immunological reaction related experiments. For more information, please consult technical personnel.

Products Images



Western blot analysis of lysates from DU145 cells, primary antibody was diluted at 1:1000, 4° over night