



# PRVA Polyclonal Antibody

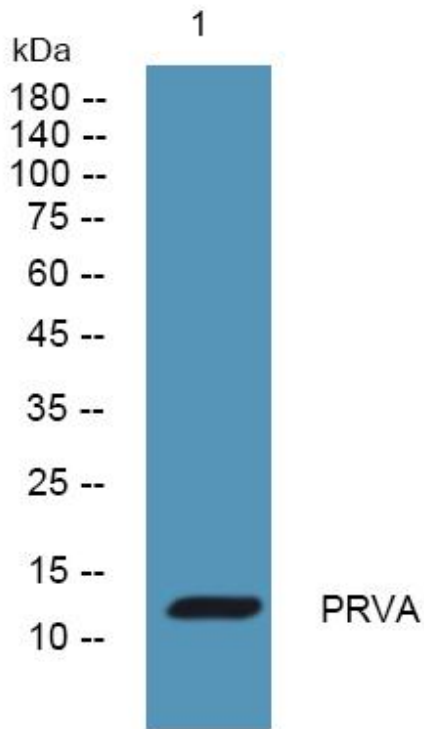
<b>Catalog No</b>	YP-Ab-06875
<b>Isotype</b>	IgG
<b>Reactivity</b>	Human;Rat;Mouse
<b>Applications</b>	WB;ELISA
<b>Gene Name</b>	PVALB
<b>Protein Name</b>	Parvalbumin alpha
<b>Immunogen</b>	Synthesized peptide derived from part region of human protein AA range: 1-50
<b>Specificity</b>	PRVA Polyclonal Antibody detects endogenous levels of protein.
<b>Formulation</b>	Liquid in PBS containing 50% glycerol, and 0.02% sodium azide.
<b>Source</b>	Polyclonal, Rabbit,IgG
<b>Purification</b>	The antibody was affinity-purified from rabbit antiserum by affinity-chromatography using epitope-specific immunogen.
<b>Dilution</b>	WB 1:500-2000 ELISA 1:5000-20000
<b>Concentration</b>	1 mg/ml
<b>Purity</b>	≥90%
<b>Storage Stability</b>	-20°C/1 year
<b>Synonyms</b>	
<b>Observed Band</b>	12kD
<b>Cell Pathway</b>	nucleus,cytoplasm,neuronal cell body,terminal bouton,protein complex,extracellular exosome,
<b>Tissue Specificity</b>	Cerebellum,
<b>Function</b>	function:In muscle, the calcium-binding protein parvalbumin is thought to be involved in muscle relaxation.,mass spectrometry:PubMed:10036163,miscellaneous:This protein binds two calcium ions.,similarity:Belongs to the parvalbumin family.,similarity:Contains 2 EF-hand domains.,
<b>Background</b>	The protein encoded by this gene is a high affinity calcium ion-binding protein that is structurally and functionally similar to calmodulin and troponin C. The encoded protein is thought to be involved in muscle relaxation. Alternative splicing results in multiple transcript variants. [provided by RefSeq, Oct 2015],
<b>matters needing attention</b>	Avoid repeated freezing and thawing!



**Usage suggestions**

This product can be used in immunological reaction related experiments. For more information, please consult technical personnel.

**Products Images**



Western blot analysis of lysates from K562 cells, primary antibody was diluted at 1:1000, 4° over night