



TM11D Polyclonal Antibody

Catalog No	YP-Ab-06895
Isotype	IgG
Reactivity	Human;Rat;Mouse
Applications	WB;ELISA
Gene Name	TMPRSS11D HAT
Protein Name	Transmembrane protease serine 11D (EC 3.4.21.-) (Airway trypsin-like protease) [Cleaved into: Transmembrane protease serine 11D non-catalytic chain; Transmembrane protease serine 11D catalytic chain]
Immunogen	Synthesized peptide derived from part region of human protein
Specificity	TM11D Polyclonal Antibody detects endogenous levels of protein.
Formulation	Liquid in PBS containing 50% glycerol, and 0.02% sodium azide.
Source	Polyclonal, Rabbit,IgG
Purification	The antibody was affinity-purified from rabbit antiserum by affinity-chromatography using epitope-specific immunogen.
Dilution	WB 1:500-2000 ELISA 1:5000-20000
Concentration	1 mg/ml
Purity	≥90%
Storage Stability	-20°C/1 year
Synonyms	
Observed Band	45kD
Cell Pathway	Cell membrane; Single-pass type II membrane protein. Activated by cleavage and secreted.; [Transmembrane protease serine 11D catalytic chain]: Secreted. Activated by cleavage and secreted.
Tissue Specificity	Located in the cells of the submucosal serous glands of the bronchi and trachea.
Function	catalytic activity:Preferentially cleaves the C-terminal side of arginine residues at the P1 position of certain peptides, cleaving Boc-Phe-Ser-Arg-4-methylcoumaryl-7-amide most efficiently and having an optimum pH of 8.6 with this substrate.,enzyme regulation:Strongly inhibited by diisopropyl fluorophosphate, leupeptin, antipain, aprotinin, and soybean trypsin inhibitor, but hardly inhibited by secretory leukocyte protease inhibitor at 10 microM.,function:May play some biological role in the host defense system on the mucous membrane independently of or in cooperation with other substances in airway mucous or bronchial secretions.,similarity:Belongs to the peptidase S1 family.,similarity:Contains 1 peptidase S1 domain.,similarity:Contains 1 SEA domain.,subcellular location:Activated by cleavage and secreted.,subunit:Monomer.,tissue specificity:Located in the cells of the submucosal sero

**Background**

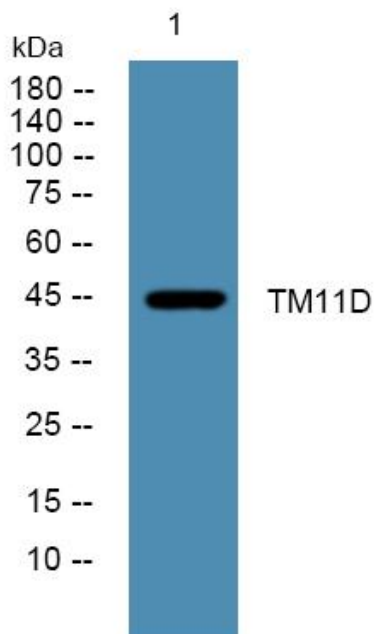
This gene encodes a trypsin-like serine protease released from the submucosal serous glands onto mucous membrane. It is a type II integral membrane protein and has 29-38% identity in the sequence of the catalytic region with human hepsin, enteropeptidase, acrosin, and mast cell tryptase. The noncatalytic region has little similarity to other known proteins. This protein may play some biological role in the host defense system on the mucous membrane independently of or in cooperation with other substances in airway mucous or bronchial secretions. [provided by RefSeq, Jul 2008],

matters needing attention

Avoid repeated freezing and thawing!

Usage suggestions

This product can be used in immunological reaction related experiments. For more information, please consult technical personnel.

Products Images

Western blot analysis of lysates from HCT116 cells, primary antibody was diluted at 1:1000, 4° over night