



AES Polyclonal Antibody

Catalog No	YP-Ab-06909
Isotype	IgG
Reactivity	Human;Rat;Mouse
Applications	WB;ELISA
Gene Name	AES GRG
Protein Name	Amino-terminal enhancer of split (Amino enhancer of split) (Gp130-associated protein GAM) (Protein ESP1) (Protein GRG)
Immunogen	Synthesized peptide derived from part region of human protein
Specificity	AES Polyclonal Antibody detects endogenous levels of protein.
Formulation	Liquid in PBS containing 50% glycerol, and 0.02% sodium azide.
Source	Polyclonal, Rabbit,IgG
Purification	The antibody was affinity-purified from rabbit antiserum by affinity-chromatography using epitope-specific immunogen.
Dilution	WB 1:500-2000 ELISA 1:5000-20000
Concentration	1 mg/ml
Purity	≥90%
Storage Stability	-20°C/1 year
Synonyms	
Observed Band	21kD
Cell Pathway	Nucleus .
Tissue Specificity	Found predominantly in muscle, heart and Placenta. In fetal tissues, abundantly expressed in the heart, lung, kidney, brain and liver.
Function	domain:Lacks the C-terminal WD repeats.,function:Acts as dominant repressor towards other family members. Inhibits NF-kappa-B-regulated gene expression. May be required for the initiation and maintenance of the differentiated state.,similarity:Belongs to the WD repeat Groucho/TLE family.,subunit:Homooligomer and heterooligomer with other family members. Binds TCF7 (By similarity). Binds the NF-kappa-B subunit RELA. Interacts with PHF12.,tissue specificity:Found predominantly in muscle, heart and Placenta. In fetal tissues, abundantly expressed in the heart, lung, kidney, brain and liver.,
Background	The protein encoded by this gene is similar in sequence to the amino terminus of Drosophila enhancer of split groucho, a protein involved in neurogenesis during embryonic development. The encoded protein, which belongs to the groucho/TLE family of proteins, can function as a homooligomer or as a heterooligomer with other family members to dominantly repress the expression of other family member genes. Three transcript variants encoding different isoforms have been found for this gene. [provided by RefSeq, Jul 2008],



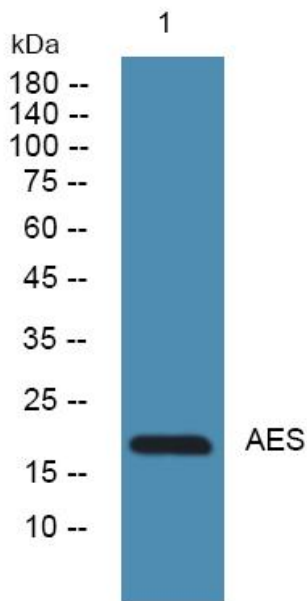
matters needing attention

Avoid repeated freezing and thawing!

Usage suggestions

This product can be used in immunological reaction related experiments. For more information, please consult technical personnel.

Products Images



Western blot analysis of lysates from A431 cells, primary antibody was diluted at 1:1000, 4°over night