

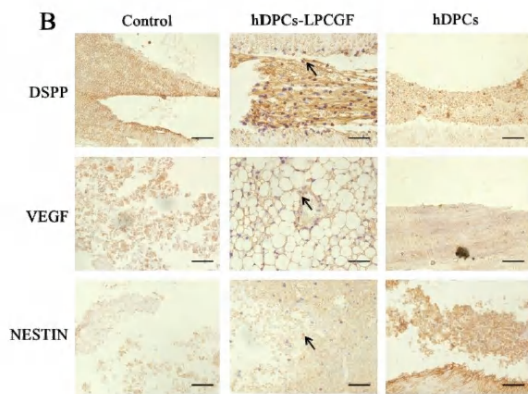


NEST Polyclonal Antibody

Catalog No	YP-Ab-06913
Isotype	IgG
Reactivity	Human;Rat;Mouse
Applications	WB;IHC
Gene Name	NES Nbla00170
Protein Name	Nestin
Immunogen	Synthesized peptide derived from part region of human protein
Specificity	NEST Polyclonal Antibody detects endogenous levels of protein.
Formulation	Liquid in PBS containing 50% glycerol, and 0.02% sodium azide.
Source	Polyclonal, Rabbit,IgG
Purification	The antibody was affinity-purified from rabbit antiserum by affinity-chromatography using epitope-specific immunogen.
Dilution	WB 1:500-2000 ELISA 1:5000-20000
Concentration	1 mg/ml
Purity	≥90%
Storage Stability	-20°C/1 year
Synonyms	
Observed Band	178kD
Cell Pathway	cytoplasm,intermediate filament,extracellular matrix,intermediate filament cytoskeleton,
Tissue Specificity	CNS stem cells.
Function	developmental stage:Upon terminal neural differentiation, nestin is down-regulated and replaced by neurofilaments.,function:May play a role in the trafficking and distribution of IF proteins and potentially other cellular factors to daughter cells during progenitor cell division.,similarity:Belongs to the intermediate filament family.,subunit:Interacts with FHOD3.,tissue specificity:CNS stem cells.,
Background	This gene encodes a member of the intermediate filament protein family and is expressed primarily in nerve cells. [provided by RefSeq, Sep 2011],
matters needing attention	Avoid repeated freezing and thawing!
Usage suggestions	This product can be used in immunological reaction related experiments. For more information, please consult technical personnel.



Products Images



Mechanism of Pulp Regeneration Based on Concentrated Growth Factors Regulating Cell Differentiation Bioengineering-Basel Sijing Yu, Yi Zheng, Qiang Guo, Wenxu Li, Ling Ye, Bo Gao IHC Mouse human dental pulp cells (hDPCs)-Xenograft