



CATS Polyclonal Antibody

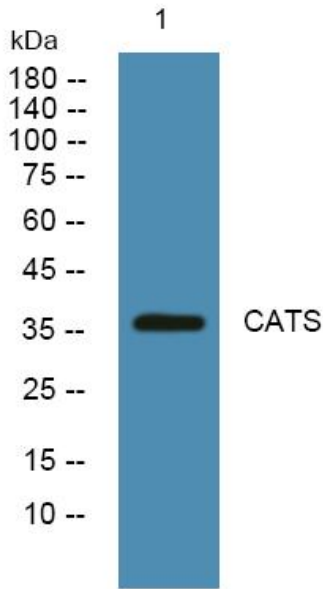
Catalog No	YP-Ab-06923
Isotype	IgG
Reactivity	Human;Rat;Mouse
Applications	WB;ELISA
Gene Name	CTSS
Protein Name	Cathepsin S (EC 3.4.22.27)
Immunogen	Synthesized peptide derived from part region of human protein
Specificity	CATS Polyclonal Antibody detects endogenous levels of protein.
Formulation	Liquid in PBS containing 50% glycerol, and 0.02% sodium azide.
Source	Polyclonal, Rabbit,IgG
Purification	The antibody was affinity-purified from rabbit antiserum by affinity-chromatography using epitope-specific immunogen.
Dilution	WB 1:500-2000 ELISA 1:5000-20000
Concentration	1 mg/ml
Purity	≥90%
Storage Stability	-20°C/1 year
Synonyms	
Observed Band	36kD
Cell Pathway	Lysosome . Secreted . Cytoplasmic vesicle, phagosome .
Tissue Specificity	Alveolar macrophage,Pancreas,Testis,
Function	catalytic activity:Similar to cathepsin L, but with much less activity on Z-Phe-Arg- -NHMeC, and more activity on the Z-Val-Val-Arg- -Xaa compound.,function:Thiol protease. Key protease responsible for the removal of the invariant chain from MHC class II molecules. The bond-specificity of this proteinase is in part similar to the specificities of cathepsin L and cathepsin N.,similarity:Belongs to the peptidase C1 family.,subunit:Monomer.,
Background	The protein encoded by this gene, a member of the peptidase C1 family, is a lysosomal cysteine proteinase that may participate in the degradation of antigenic proteins to peptides for presentation on MHC class II molecules. The encoded protein can function as an elastase over a broad pH range in alveolar macrophages. Alternatively spliced transcript variants encoding distinct isoforms have been found for this gene. [provided by RefSeq, Dec 2010],
matters needing attention	Avoid repeated freezing and thawing!



Usage suggestions

This product can be used in immunological reaction related experiments. For more information, please consult technical personnel.

Products Images



Western blot analysis of lysates from HCT116 cells, primary antibody was diluted at 1:1000, 4° over night