

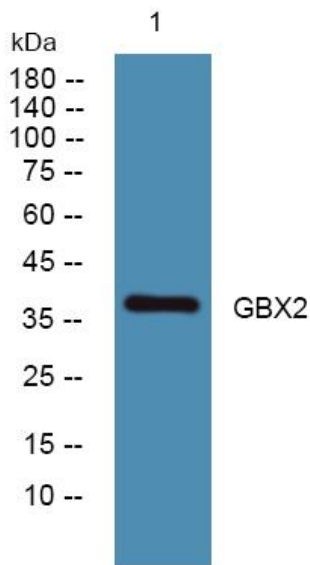


GBX2 Polyclonal Antibody

Catalog No	YP-Ab-06945
Isotype	IgG
Reactivity	Human;Mouse
Applications	WB;ELISA
Gene Name	GBX2
Protein Name	Homeobox protein GBX-2 (Gastrulation and brain-specific homeobox protein 2)
Immunogen	Synthesized peptide derived from part region of human protein
Specificity	GBX2 Polyclonal Antibody detects endogenous levels of protein.
Formulation	Liquid in PBS containing 50% glycerol, and 0.02% sodium azide.
Source	Polyclonal, Rabbit,IgG
Purification	The antibody was affinity-purified from rabbit antiserum by affinity-chromatography using epitope-specific immunogen.
Dilution	WB 1:500-2000 ELISA 1:5000-20000
Concentration	1 mg/ml
Purity	≥90%
Storage Stability	-20°C/1 year
Synonyms	
Observed Band	38kD
Cell Pathway	Nucleus .
Tissue Specificity	Brain,
Function	function:May act as a transcription factor for cell pluripotency and differentiation in the embryo.,similarity:Contains 1 homeobox DNA-binding domain.,
Background	function:May act as a transcription factor for cell pluripotency and differentiation in the embryo.,similarity:Contains 1 homeobox DNA-binding domain.,
matters needing attention	Avoid repeated freezing and thawing!
Usage suggestions	This product can be used in immunological reaction related experiments. For more information, please consult technical personnel.



Products Images



Western blot analysis of lysates from K562 cells,
primary antibody was diluted at 1:1000, 4° over night