



# RASM Polyclonal Antibody

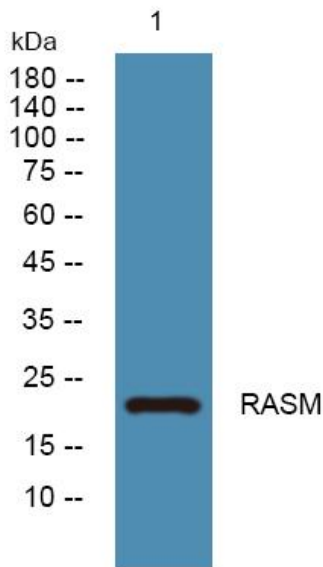
<b>Catalog No</b>	YP-Ab-06962
<b>Isotype</b>	IgG
<b>Reactivity</b>	Human;Rat;Mouse
<b>Applications</b>	WB;ELISA
<b>Gene Name</b>	MRAS RRAS3
<b>Protein Name</b>	Ras-related protein M-Ras (Ras-related protein R-Ras3)
<b>Immunogen</b>	Synthesized peptide derived from part region of human protein
<b>Specificity</b>	RASM Polyclonal Antibody detects endogenous levels of protein.
<b>Formulation</b>	Liquid in PBS containing 50% glycerol, and 0.02% sodium azide.
<b>Source</b>	Polyclonal, Rabbit,IgG
<b>Purification</b>	The antibody was affinity-purified from rabbit antiserum by affinity-chromatography using epitope-specific immunogen.
<b>Dilution</b>	WB 1:500-2000 ELISA 1:5000-20000
<b>Concentration</b>	1 mg/ml
<b>Purity</b>	≥90%
<b>Storage Stability</b>	-20°C/1 year
<b>Synonyms</b>	
<b>Observed Band</b>	22kD
<b>Cell Pathway</b>	Cell membrane ; Lipid-anchor ; Cytoplasmic side .
<b>Tissue Specificity</b>	Expression highly restricted to the brain and heart.
<b>Function</b>	function:May serve as an important signal transducer for a novel upstream stimuli in controlling cell proliferation. Weakly activates the MAP kinase pathway.,induction:By interleukin-9, but not by IL-2 or IL-4.,similarity:Belongs to the small GTPase superfamily. Ras family.,subunit:Interacts with RGL3.,tissue specificity:Expression highly restricted to the brain and heart.,
<b>Background</b>	This gene encodes a member of the Ras family of small GTPases. These membrane-associated proteins function as signal transducers in multiple processes including cell growth and differentiation, and dysregulation of Ras signaling has been associated with many types of cancer. The encoded protein may play a role in the tumor necrosis factor-alpha and MAP kinase signaling pathways. Alternatively spliced transcript variants encoding multiple isoforms have been observed for this gene. [provided by RefSeq, Nov 2011],
<b>matters needing attention</b>	Avoid repeated freezing and thawing!



**Usage suggestions**

This product can be used in immunological reaction related experiments. For more information, please consult technical personnel.

**Products Images**



Western blot analysis of lysates from Jarkat cells, primary antibody was diluted at 1:1000, 4° over night