



OSTCN Polyclonal Antibody

Catalog No	YP-Ab-06975
Isotype	IgG
Reactivity	Human;Rat;Mouse
Applications	WB IF;ELISA
Gene Name	BGLAP
Protein Name	Osteocalcin (Bone Gla protein) (BGP) (Gamma-carboxyglutamic acid-containing protein)
Immunogen	Synthesized peptide derived from part region of human protein AA range: 31-80
Specificity	OSTCN Polyclonal Antibody detects endogenous levels of protein.
Formulation	Liquid in PBS containing 50% glycerol, and 0.02% sodium azide.
Source	Polyclonal, Rabbit,IgG
Purification	The antibody was affinity-purified from rabbit antiserum by affinity-chromatography using epitope-specific immunogen.
Dilution	WB 1:500-2000 IF 1:100-300 ELISA 1:5000-20000 Not yet tested in other applications.
Concentration	1 mg/ml
Purity	≥90%
Storage Stability	-20°C/1 year
Synonyms	
Observed Band	11kD
Cell Pathway	Secreted.
Tissue Specificity	Brain,Cerebellum,Colon,Lung carcinoma,Skin,Testis,Uterus,
Function	function:Constitutes 1-2% of the total bone protein. It binds strongly to apatite and calcium.,function:Part of the MIS12 complex which is required for normal chromosome alignment and segregation and kinetochore formation during mitosis. May act as a cotranscription partner of NFE2L2 involved in regulation of polyamine-induced transcription of SSAT.,induction:By polyamine analogs in analog-sensitive H157 cells.,online information:Osteocalcin entry,PTM:Gamma-carboxyglutamate residues are formed by vitamin K dependent carboxylation. These residues are essential for the binding of calcium.,similarity:Belongs to the osteocalcin/matrix Gla protein family.,similarity:Contains 1 Gla (gamma-carboxy-glutamate) domain.,subcellular location:Associated with the kinetochore.,subunit:Component of the MIS12 complex composed of MIS12, DSN1, NSL1 and PMF1. Interacts with COPS7A. Interacts via its coiled-
Background	This gene encodes a highly abundant bone protein secreted by osteoblasts that regulates bone remodeling and energy metabolism. The encoded protein contains



a Gla (gamma carboxyglutamate) domain, which functions in binding to calcium and hydroxyapatite, the mineral component of bone. Serum osteocalcin levels may be negatively correlated with metabolic syndrome. Read-through transcription exists between this gene and the neighboring upstream gene, PMF1 (polyamine-modulated factor 1), but the encoded protein only shows sequence identity with the upstream gene product. [provided by RefSeq, Jun 2015],

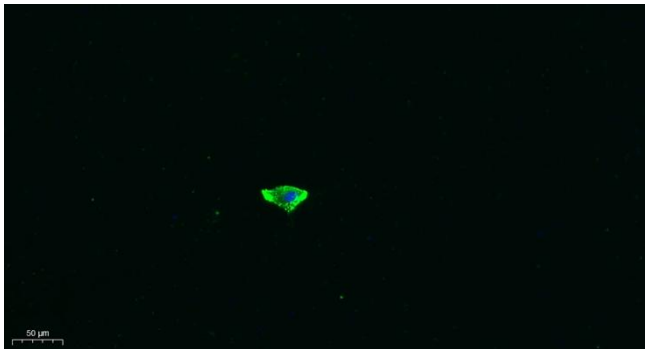
matters needing attention

Avoid repeated freezing and thawing!

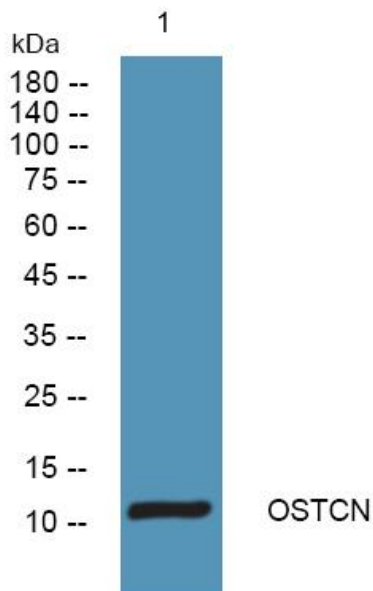
Usage suggestions

This product can be used in immunological reaction related experiments. For more information, please consult technical personnel.

Products Images



Immunofluorescence analysis of A549. 1,primary Antibody was diluted at 1:200(4°C overnight). 2, Goat Anti Rabbit IgG (H&L) - Alexa Fluor 488 Secondary antibody was diluted at 1:1000(room temperature, 50min).3, Picture B: DAPI(blue) 10min.



Western blot analysis of lysates from KB cells, primary antibody was diluted at 1:1000, 4°over night