



FHR1 Polyclonal Antibody

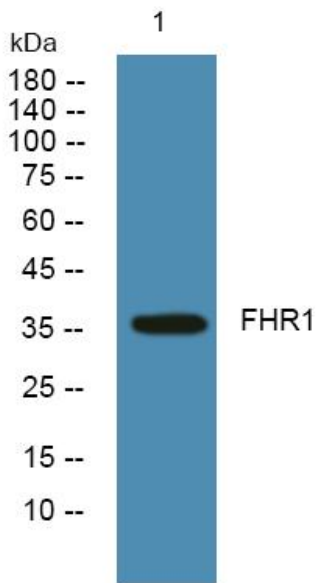
Catalog No	YP-Ab-06976
Isotype	IgG
Reactivity	Human;Rat;Mouse;
Applications	WB;ELISA
Gene Name	CFHR1 CFHL CFHL1 CFHL1P CFHR1P FHR1 HFL1 HFL2
Protein Name	Complement factor H-related protein 1 (FHR-1) (H factor-like protein 1) (H-factor-like 1) (H36)
Immunogen	Synthesized peptide derived from part region of human protein
Specificity	FHR1 Polyclonal Antibody detects endogenous levels of protein.
Formulation	Liquid in PBS containing 50% glycerol, and 0.02% sodium azide.
Source	Polyclonal, Rabbit,IgG
Purification	The antibody was affinity-purified from rabbit antiserum by affinity-chromatography using epitope-specific immunogen.
Dilution	WB 1:500-2000 ELISA 1:5000-20000
Concentration	1 mg/ml
Purity	≥90%
Storage Stability	-20°C/1 year
Synonyms	
Observed Band	36kD
Cell Pathway	Secreted.
Tissue Specificity	Expressed by the liver and secreted in plasma.
Function	function:Might be involved in complement regulation. Can associate with lipoproteins and may play a role in lipid metabolism.,PTM:N-glycosylated. Two forms are observed; one with a single side chain and the other with two.,similarity:Contains 5 Sushi (CCP/SCR) domains.,tissue specificity:Expressed by the liver and secreted in plasma.,
Background	This gene encodes a secreted protein belonging to the complement factor H protein family. It binds to Pseudomonas aeruginosa elongation factor Tuf together with plasminogen, which is proteolytically activated. It is proposed that Tuf acts as a virulence factor by acquiring host proteins to the pathogen surface, controlling complement, and facilitating tissue invasion. Mutations in this gene are associated with an increased risk of atypical hemolytic-uremic syndrome. [provided by RefSeq, Oct 2009],
matters needing attention	Avoid repeated freezing and thawing!



Usage suggestions

This product can be used in immunological reaction related experiments. For more information, please consult technical personnel.

Products Images



Western blot analysis of lysates from PC12 cells, primary antibody was diluted at 1:1000, 4° over night