

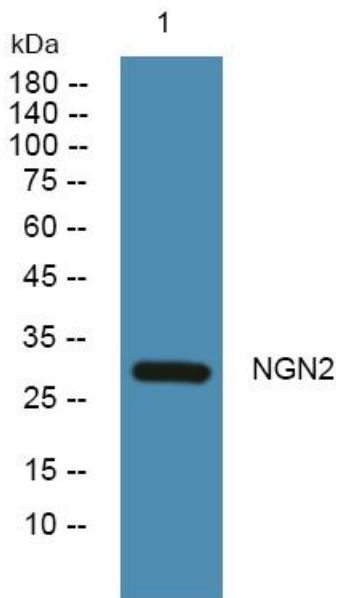


NGN2 Polyclonal Antibody

| | |
|----------------------------------|--|
| Catalog No | YP-Ab-06980 |
| Isotype | IgG |
| Reactivity | Human;Mouse |
| Applications | WB;ELISA |
| Gene Name | NEUROG2 ATOH4 BHLHA8 NGN2 |
| Protein Name | Neurogenin-2 (NGN-2) (Class A basic helix-loop-helix protein 8) (bHLHa8) (Protein atonal homolog 4) |
| Immunogen | Synthesized peptide derived from part region of human protein |
| Specificity | NGN2 Polyclonal Antibody detects endogenous levels of protein. |
| Formulation | Liquid in PBS containing 50% glycerol, and 0.02% sodium azide. |
| Source | Polyclonal, Rabbit,IgG |
| Purification | The antibody was affinity-purified from rabbit antiserum by affinity-chromatography using epitope-specific immunogen. |
| Dilution | WB 1:500-2000 ELISA 1:5000-20000 |
| Concentration | 1 mg/ml |
| Purity | ≥90% |
| Storage Stability | -20°C/1 year |
| Synonyms | |
| Observed Band | 29kD |
| Cell Pathway | Nucleus . |
| Tissue Specificity | Brain, |
| Function | function:Involved in neurogenesis.,similarity:Contains 1 basic helix-loop-helix (bHLH) domain.,subunit:Efficient DNA binding requires dimerization with another bHLH protein., |
| Background | This gene encodes a neural-specific basic helix-loop-helix (bHLH) transcription factor that can specify a neuronal fate on ectodermal cells and is expressed in neural progenitor cells within the developing central and peripheral nervous systems. The protein product of this gene also plays a role in the differentiation and survival of midbrain dopaminergic neurons. [provided by RefSeq, Apr 2012], |
| matters needing attention | Avoid repeated freezing and thawing! |
| Usage suggestions | This product can be used in immunological reaction related experiments. For more information, please consult technical personnel. |



Products Images



Western blot analysis of lysates from HCT116 cells, primary antibody was diluted at 1:1000, 4° over night