



KLRF1 Polyclonal Antibody

Catalog No	YP-Ab-06981
Isotype	IgG
Reactivity	Human;Rat;Mouse;
Applications	WB;ELISA
Gene Name	KLRF1 CLEC5C ML
Protein Name	Killer cell lectin-like receptor subfamily F member 1 (Lectin-like receptor F1) (Activating coreceptor NKp80) (C-type lectin domain family 5 member C)
Immunogen	Synthesized peptide derived from part region of human protein
Specificity	KLRF1 Polyclonal Antibody detects endogenous levels of protein.
Formulation	Liquid in PBS containing 50% glycerol, and 0.02% sodium azide.
Source	Polyclonal, Rabbit,IgG
Purification	The antibody was affinity-purified from rabbit antiserum by affinity-chromatography using epitope-specific immunogen.
Dilution	WB 1:500-2000 ELISA 1:5000-20000
Concentration	1 mg/ml
Purity	≥90%
Storage Stability	-20°C/1 year
Synonyms	
Observed Band	25kD
Cell Pathway	Membrane ; Single-pass type II membrane protein .
Tissue Specificity	Strongly expressed in peripheral blood leukocytes and spleen, with weaker expression in lymph node and adult liver, and no expression detected in bone marrow, thymus, and fetal liver. Not expressed in brain, heart, placenta, lung, kidney, skeletal muscle, and pancreas. Within peripheral blood leukocyte and immunocyte cell lines, expression was predominant in NK cells but was also detected in monocytes.
Function	function:Involved in the natural killer (NK)-mediated cytolysis of PHA-induced lymphoblasts.,online information:KLRF1,similarity:Contains 1 C-type lectin domain.,subunit:Homodimer.,tissue specificity:Strongly expressed in peripheral blood leukocytes and spleen, with weaker expression in lymph node and adult liver, and no expression detected in bone marrow, thymus, and fetal liver. Not expressed in brain, heart, placenta, lung, kidney, skeletal muscle, and pancreas. Within peripheral blood leukocyte and immunocyte cell lines, expression was predominant in NK cells but was also detected in monocytes.,
Background	KLRF1, an activating homodimeric C-type lectin-like receptor (CLR), is expressed on nearly all natural killer (NK) cells and stimulates their cytotoxicity and cytokine release (Kuttruff et al., 2009 [PubMed 18922855]).[supplied by OMIM,



Oct 2009],

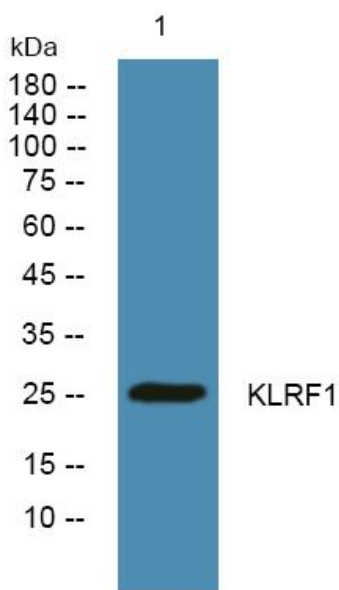
matters needing attention

Avoid repeated freezing and thawing!

Usage suggestions

This product can be used in immunological reaction related experiments. For more information, please consult technical personnel.

Products Images



Western blot analysis of lysates from U2OS cells, primary antibody was diluted at 1:1000, 4° over night