



HBM Polyclonal Antibody

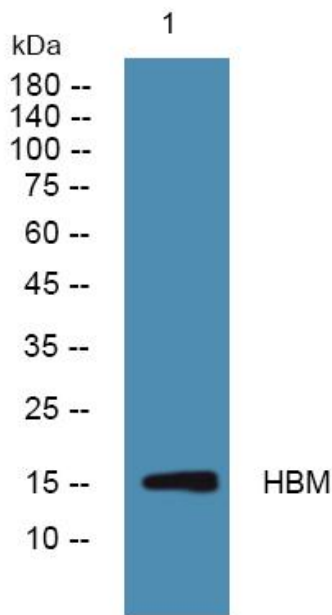
Catalog No	YP-Ab-06990
Isotype	IgG
Reactivity	Human;Rat;Mouse;
Applications	WB;ELISA
Gene Name	HBM HBAP2
Protein Name	Hemoglobin subunit mu (Hemoglobin mu chain) (Mu-globin)
Immunogen	Synthesized peptide derived from part region of human protein
Specificity	HBM Polyclonal Antibody detects endogenous levels of protein.
Formulation	Liquid in PBS containing 50% glycerol, and 0.02% sodium azide.
Source	Polyclonal, Rabbit,IgG
Purification	The antibody was affinity-purified from rabbit antiserum by affinity-chromatography using epitope-specific immunogen.
Dilution	WB 1:500-2000 ELISA 1:5000-20000
Concentration	1 mg/ml
Purity	≥90%
Storage Stability	-20°C/1 year
Synonyms	
Observed Band	15kD
Cell Pathway	hemoglobin complex,extracellular exosome,
Tissue Specificity	Expressed in erythroid tissues.
Function	developmental stage:Maximal expression during the erythroblast terminal differentiation.,similarity:Belongs to the globin family.,tissue specificity:Expressed in erythroid tissues.,
Background	The human alpha globin gene cluster located on chromosome 16 spans about 30 kb and includes seven loci: 5'- zeta - pseudozeta - mu - pseudoalpha-1 - alpha-2 - alpha-1 - theta - 3'. This gene has an ORF encoding a 141 aa polypeptide which is similar to the delta globins found in reptiles and birds. This locus was originally described as a pseudogene; however, it is currently thought to be a protein-coding gene. [provided by RefSeq, Jul 2008],
matters needing attention	Avoid repeated freezing and thawing!



Usage suggestions

This product can be used in immunological reaction related experiments. For more information, please consult technical personnel.

Products Images



Western blot analysis of lysates from HCT116 cells, primary antibody was diluted at 1:1000, 4° over night