



DKK2 Polyclonal Antibody

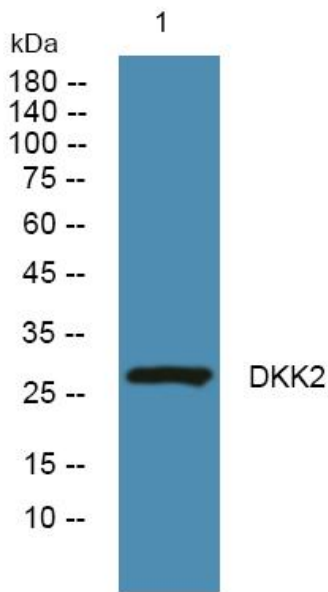
Catalog No	YP-Ab-06992
Isotype	IgG
Reactivity	Human;Mouse
Applications	WB;ELISA
Gene Name	DKK2 UNQ682/PRO1316
Protein Name	Dickkopf-related protein 2 (Dickkopf-2) (Dkk-2) (hDkk-2)
Immunogen	Synthesized peptide derived from part region of human protein
Specificity	DKK2 Polyclonal Antibody detects endogenous levels of protein.
Formulation	Liquid in PBS containing 50% glycerol, and 0.02% sodium azide.
Source	Polyclonal, Rabbit,IgG
Purification	The antibody was affinity-purified from rabbit antiserum by affinity-chromatography using epitope-specific immunogen.
Dilution	WB 1:500-2000 ELISA 1:5000-20000
Concentration	1 mg/ml
Purity	≥90%
Storage Stability	-20°C/1 year
Synonyms	
Observed Band	28kD
Cell Pathway	Secreted.
Tissue Specificity	Expressed in heart, brain, skeletal muscle and lung.
Function	function:Inhibitor of Wnt signaling pathway .,PTM:May be proteolytically processed by a furin-like protease.,similarity:Belongs to the dickkopf family.,tissue specificity:Expressed in heart, brain, skeletal muscle and lung.,
Background	This gene encodes a protein that is a member of the dickkopf family. The secreted protein contains two cysteine rich regions and is involved in embryonic development through its interactions with the Wnt signaling pathway. It can act as either an agonist or antagonist of Wnt/beta-catenin signaling, depending on the cellular context and the presence of the co-factor kremen 2. Activity of this protein is also modulated by binding to the Wnt co-receptor LDL-receptor related protein 6 (LRP6). [provided by RefSeq, Jul 2008],
matters needing attention	Avoid repeated freezing and thawing!



Usage suggestions

This product can be used in immunological reaction related experiments. For more information, please consult technical personnel.

Products Images



Western blot analysis of lysates from DU145 cells, primary antibody was diluted at 1:1000, 4° over night