



# REG1B Polyclonal Antibody

<b>Catalog No</b>	YP-Ab-07012
<b>Isotype</b>	IgG
<b>Reactivity</b>	Human;Rat;Mouse;
<b>Applications</b>	WB;ELISA
<b>Gene Name</b>	REG1B PSPS2 REGL
<b>Protein Name</b>	Lithostathine-1-beta (Pancreatic stone protein 2) (PSP-2) (Regenerating islet-derived protein 1-beta) (REG-1-beta) (Regenerating protein I beta)
<b>Immunogen</b>	Synthesized peptide derived from part region of human protein
<b>Specificity</b>	REG1B Polyclonal Antibody detects endogenous levels of protein.
<b>Formulation</b>	Liquid in PBS containing 50% glycerol, and 0.02% sodium azide.
<b>Source</b>	Polyclonal, Rabbit,IgG
<b>Purification</b>	The antibody was affinity-purified from rabbit antiserum by affinity-chromatography using epitope-specific immunogen.
<b>Dilution</b>	WB 1:500-2000 ELISA 1:5000-20000
<b>Concentration</b>	1 mg/ml
<b>Purity</b>	≥90%
<b>Storage Stability</b>	-20°C/1 year
<b>Synonyms</b>	
<b>Observed Band</b>	18kD
<b>Cell Pathway</b>	Secreted.
<b>Tissue Specificity</b>	Bladder,Pancreas,
<b>Function</b>	function:Might act as an inhibitor of spontaneous calcium carbonate precipitation. May be associated with neuronal sprouting in brain, and with brain and pancreas regeneration.,online information:Lithostathine A,PTM:All O-linked glycans consist of Gal-GlcNAc-Gal-GalNAc tetrasaccharide core and get elongated (microheterogeneity).,similarity:Contains 1 C-type lectin domain.,
<b>Background</b>	This gene is a type I subclass member of the Reg gene family. The Reg gene family is a multigene family grouped into four subclasses, types I, II, III and IV based on the primary structures of the encoded proteins. This gene encodes a protein secreted by the exocrine pancreas that is highly similar to the REG1A protein. The related REG1A protein is associated with islet cell regeneration and diabetogenesis, and may be involved in pancreatic lithogenesis. Reg family members REG1A, REGL, PAP and this gene are tandemly clustered on chromosome 2p12 and may have arisen from the same ancestral gene by gene duplication. [provided by RefSeq, Jul 2008],



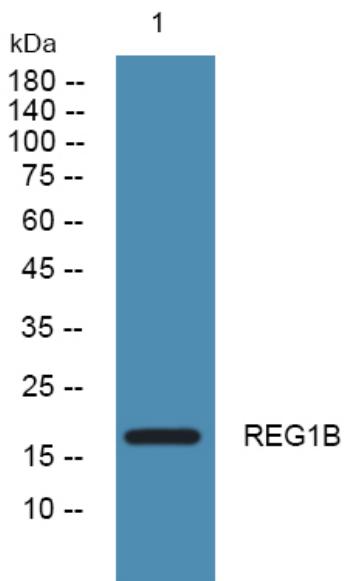
**matters needing attention**

Avoid repeated freezing and thawing!

**Usage suggestions**

This product can be used in immunological reaction related experiments. For more information, please consult technical personnel.

## Products Images



Western blot analysis of lysates from SH-SY5Y cells, primary antibody was diluted at 1:1000, 4° over night