



# KLK5 Polyclonal Antibody

<b>Catalog No</b>	YP-Ab-07013
<b>Isotype</b>	IgG
<b>Reactivity</b>	Human;Rat;Mouse;
<b>Applications</b>	WB;ELISA
<b>Gene Name</b>	KLK5 SCTE UNQ570/PRO1132
<b>Protein Name</b>	Kallikrein-5 (EC 3.4.21.-) (Kallikrein-like protein 2) (KLK-L2) (Stratum corneum tryptic enzyme)
<b>Immunogen</b>	Synthesized peptide derived from part region of human protein
<b>Specificity</b>	KLK5 Polyclonal Antibody detects endogenous levels of protein.
<b>Formulation</b>	Liquid in PBS containing 50% glycerol, and 0.02% sodium azide.
<b>Source</b>	Polyclonal, Rabbit,IgG
<b>Purification</b>	The antibody was affinity-purified from rabbit antiserum by affinity-chromatography using epitope-specific immunogen.
<b>Dilution</b>	WB 1:500-2000 ELISA 1:5000-20000
<b>Concentration</b>	1 mg/ml
<b>Purity</b>	≥90%
<b>Storage Stability</b>	-20°C/1 year
<b>Synonyms</b>	
<b>Observed Band</b>	32kD
<b>Cell Pathway</b>	Secreted.
<b>Tissue Specificity</b>	Expressed in skin, breast, brain and testis. Expressed at the stratum granulosum of palmar skin.
<b>Function</b>	function:May be involved in desquamation.,similarity:Belongs to the peptidase S1 family.,similarity:Belongs to the peptidase S1 family. Kallikrein subfamily.,similarity:Contains 1 peptidase S1 domain.,tissue specificity:Expressed in skin, breast, brain and testis.,
<b>Background</b>	Kallikreins are a subgroup of serine proteases having diverse physiological functions. Growing evidence suggests that many kallikreins are implicated in carcinogenesis and some have potential as novel cancer and other disease biomarkers. This gene is one of the fifteen kallikrein subfamily members located in a cluster on chromosome 19. Its expression is up-regulated by estrogens and progestins. The encoded protein is secreted and may be involved in desquamation in the epidermis. Alternative splicing results in multiple transcript variants encoding the same protein. [provided by RefSeq, Jul 2008],



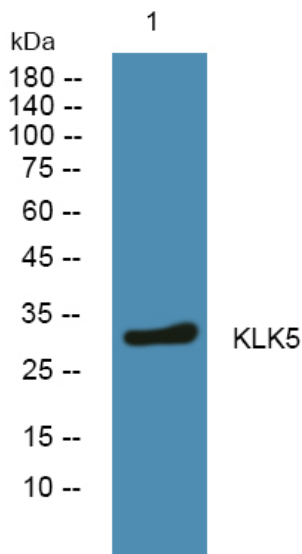
**matters needing attention**

Avoid repeated freezing and thawing!

**Usage suggestions**

This product can be used in immunological reaction related experiments. For more information, please consult technical personnel.

**Products Images**



Western blot analysis of lysates from DU145 cells, primary antibody was diluted at 1:1000, 4°over night