



SPIT2 Polyclonal Antibody

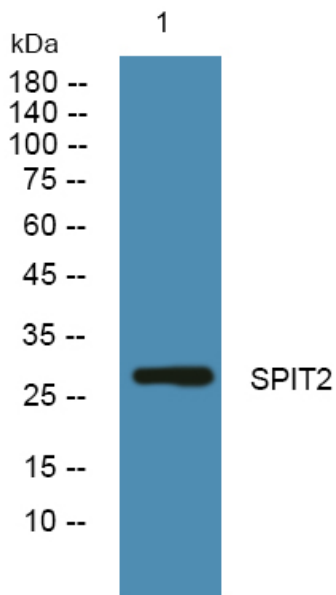
Catalog No	YP-Ab-07014
Isotype	IgG
Reactivity	Human;Mouse
Applications	WB;ELISA
Gene Name	SPINT2 HAI2 KOP
Protein Name	Kunitz-type protease inhibitor 2 (Hepatocyte growth factor activator inhibitor type 2) (HAI-2) (Placental bikunin)
Immunogen	Synthesized peptide derived from part region of human protein
Specificity	SPIT2 Polyclonal Antibody detects endogenous levels of protein.
Formulation	Liquid in PBS containing 50% glycerol, and 0.02% sodium azide.
Source	Polyclonal, Rabbit,IgG
Purification	The antibody was affinity-purified from rabbit antiserum by affinity-chromatography using epitope-specific immunogen.
Dilution	WB 1:500-2000 ELISA 1:5000-20000
Concentration	1 mg/ml
Purity	≥90%
Storage Stability	-20°C/1 year
Synonyms	
Observed Band	27kD
Cell Pathway	Membrane ; Single-pass type I membrane protein .
Tissue Specificity	Expressed in placenta, kidney, pancreas, prostate, testis, thymus, and trachea.
Function	domain:This inhibitor contains two inhibitory domains.,function:Inhibitor of HGF activator. Also inhibits plasmin, plasma and tissue kallikrein, and factor XIa.,similarity:Contains 1 BPTI/Kunitz inhibitor domain.,similarity:Contains 2 BPTI/Kunitz inhibitor domains.,tissue specificity:Expressed in placenta, kidney, pancreas, prostate, testis, thymus, and trachea.,
Background	This gene encodes a transmembrane protein with two extracellular Kunitz domains that inhibits a variety of serine proteases. The protein inhibits HGF activator which prevents the formation of active hepatocyte growth factor. This gene is a putative tumor suppressor, and mutations in this gene result in congenital sodium diarrhea. Multiple transcript variants encoding different isoforms have been found for this gene. [provided by RefSeq, Oct 2009],
matters needing attention	Avoid repeated freezing and thawing!



Usage suggestions

This product can be used in immunological reaction related experiments. For more information, please consult technical personnel.

Products Images



Western blot analysis of lysates from K562 cells, primary antibody was diluted at 1:1000, 4° over night