



# CART Polyclonal Antibody

<b>Catalog No</b>	YP-Ab-07018
<b>Isotype</b>	IgG
<b>Reactivity</b>	Human;Rat;Mouse
<b>Applications</b>	WB;ELISA
<b>Gene Name</b>	CARTPT CART
<b>Protein Name</b>	Cocaine- and amphetamine-regulated transcript protein [Cleaved into: CART(1-39); CART(42-89)]
<b>Immunogen</b>	Synthesized peptide derived from part region of human protein AA range: 1-50
<b>Specificity</b>	CART Polyclonal Antibody detects endogenous levels of protein.
<b>Formulation</b>	Liquid in PBS containing 50% glycerol, and 0.02% sodium azide.
<b>Source</b>	Polyclonal, Rabbit,IgG
<b>Purification</b>	The antibody was affinity-purified from rabbit antiserum by affinity-chromatography using epitope-specific immunogen.
<b>Dilution</b>	WB 1:500-2000 ELISA 1:5000-20000
<b>Concentration</b>	1 mg/ml
<b>Purity</b>	≥90%
<b>Storage Stability</b>	-20°C/1 year
<b>Synonyms</b>	
<b>Observed Band</b>	12kD
<b>Cell Pathway</b>	Secreted .
<b>Tissue Specificity</b>	Hypothalamus. Found in neurons of the ventrolateral part of the arcuate nucleus, in the external zone of the median eminence, and also found in terminals in the periventricular part of the paraventricular nucleus.
<b>Function</b>	disease:A defect in CART is associated with reduced resting energy expenditure and cosegregates with obesity phenotype.,function:Satiety factor closely associated with the actions of leptin and neuropeptide y; this anorectic peptide inhibits both normal and starvation-induced feeding and completely blocks the feeding response induced by neuropeptide Y and regulated by leptin in the hypothalamus. It promotes neuronal development and survival in vitro.,induction:By leptin.,similarity:Belongs to the CART family.,tissue specificity:Hypothalamus. Found in neurons of the ventrolateral part of the arcuate nucleus, in the external zone of the median eminence, and also found in terminals in the periventricular part of the paraventricular nucleus.,
<b>Background</b>	This gene encodes a preproprotein that is proteolytically processed to generate multiple biologically active peptides. These peptides play a role in appetite, energy balance, maintenance of body weight, reward and addiction, and the stress response. Expression of a similar gene transcript in rodents is upregulated



following administration of cocaine and amphetamine. Mutations in this gene are associated with susceptibility to obesity in humans. [provided by RefSeq, Feb 2016],

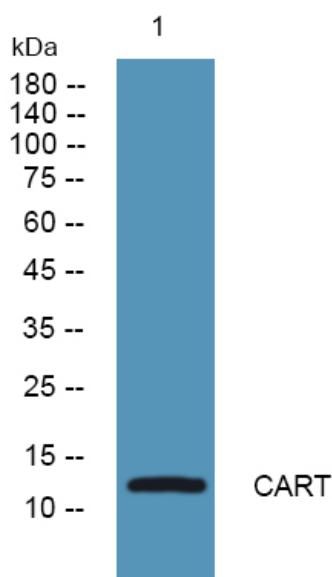
**matters needing attention**

Avoid repeated freezing and thawing!

**Usage suggestions**

This product can be used in immunological reaction related experiments. For more information, please consult technical personnel.

**Products Images**



Western blot analysis of lysates from K562 cells, primary antibody was diluted at 1:1000, 4° over night