



# Iba1 Polyclonal Antibody

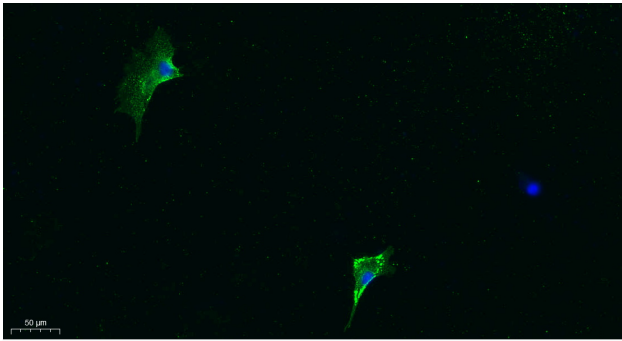
<b>Catalog No</b>	YP-Ab-07027
<b>Isotype</b>	IgG
<b>Reactivity</b>	Human;Rat;Mouse
<b>Applications</b>	WB;IF;ELISA
<b>Gene Name</b>	AIF1 G1 IBA1
<b>Protein Name</b>	Allograft inflammatory factor 1 (AIF-1) (Ionized calcium-binding adapter molecule 1) (Protein G1)
<b>Immunogen</b>	Synthesized peptide derived from part region of human protein
<b>Specificity</b>	AIF1 Polyclonal Antibody detects endogenous levels of protein.
<b>Formulation</b>	Liquid in PBS containing 50% glycerol, and 0.02% sodium azide.
<b>Source</b>	Polyclonal, Rabbit,IgG
<b>Purification</b>	The antibody was affinity-purified from rabbit antiserum by affinity-chromatography using epitope-specific immunogen.
<b>Dilution</b>	Western Blot: 1/500 - 1/2000. ELISA: 1/5000. IF 1:100-300 Not yet tested in other applications.
<b>Concentration</b>	1 mg/ml
<b>Purity</b>	≥90%
<b>Storage Stability</b>	-20°C/1 year
<b>Synonyms</b>	
<b>Observed Band</b>	16kD
<b>Cell Pathway</b>	Cytoplasm, cytoskeleton . Cell projection, ruffle membrane ; Peripheral membrane protein ; Cytoplasmic side . Cell projection, phagocytic cup . Associated with the actin cytoskeleton at membrane ruffles and at sites of phagocytosis. .
<b>Tissue Specificity</b>	Detected in T-lymphocytes and peripheral blood mononuclear cells.
<b>Function</b>	function:May play a role in macrophage activation and function.,PTM:Phosphorylated on serine residues.,similarity:Contains 2 EF-hand domains.,
<b>Background</b>	This gene encodes a protein that binds actin and calcium. This gene is induced by cytokines and interferon and may promote macrophage activation and growth of vascular smooth muscle cells and T-lymphocytes. Polymorphisms in this gene may be associated with systemic sclerosis. Alternative splicing results in multiple transcript variants, but the full-length and coding nature of some of these variants is not certain. [provided by RefSeq, Jan 2016],
<b>matters needing attention</b>	Avoid repeated freezing and thawing!



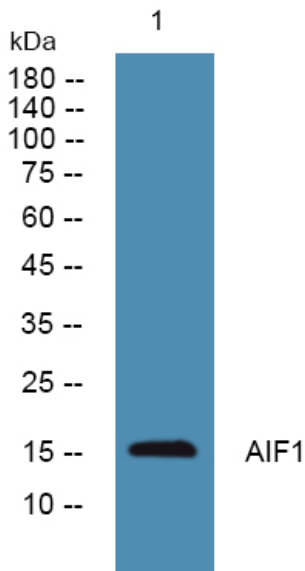
### Usage suggestions

This product can be used in immunological reaction related experiments. For more information, please consult technical personnel.

## Products Images



Immunofluorescence analysis of A549. 1,primary Antibody was diluted at 1:200(4°C overnight). 2, Goat Anti Rabbit IgG (H&L) - Alexa Fluor 488 Secondary antibody was diluted at 1:1000(room temperature, 50min).3, Picture B: DAPI(blue) 10min.



Western blot analysis of lysates from U2OS cells, primary antibody was diluted at 1:1000, 4°over night