



# OSCAR Polyclonal Antibody

<b>Catalog No</b>	YP-Ab-07034
<b>Isotype</b>	IgG
<b>Reactivity</b>	Human;Mouse
<b>Applications</b>	WB;ELISA
<b>Gene Name</b>	OSCAR
<b>Protein Name</b>	Osteoclast-associated immunoglobulin-like receptor (Osteoclast-associated receptor) (hOSCAR) (Polymeric immunoglobulin receptor 3) (PIgR-3) (PIgR3) (Poly-Ig receptor 3)
<b>Immunogen</b>	Synthesized peptide derived from part region of human protein
<b>Specificity</b>	OSCAR Polyclonal Antibody detects endogenous levels of protein.
<b>Formulation</b>	Liquid in PBS containing 50% glycerol, and 0.02% sodium azide.
<b>Source</b>	Polyclonal, Rabbit,IgG
<b>Purification</b>	The antibody was affinity-purified from rabbit antiserum by affinity-chromatography using epitope-specific immunogen.
<b>Dilution</b>	WB 1:500-2000 ELISA 1:5000-20000
<b>Concentration</b>	1 mg/ml
<b>Purity</b>	≥90%
<b>Storage Stability</b>	-20°C/1 year
<b>Synonyms</b>	
<b>Observed Band</b>	31kD
<b>Cell Pathway</b>	[Isoform 1]: Secreted .; [Isoform 2]: Cell membrane ; Single-pass type I membrane protein .
<b>Tissue Specificity</b>	Testis,
<b>Function</b>	caution:The sequence shown here is derived from an Ensembl automatic analysis pipeline and should be considered as preliminary data.,function:Regulator of osteoclastogenesis which plays an important bone-specific function in osteoclast differentiation.,similarity:Belongs to the leukocyte receptor complex/polymeric immunoglobulin receptor (PIR/LRC) family.,similarity:Contains 2 Ig-like (immunoglobulin-like) domains.,
<b>Background</b>	Osteoclasts are multinucleated cells that resorb bone and are essential for bone homeostasis. This gene encodes an osteoclast-associated receptor (OSCAR), which is a member of the leukocyte receptor complex protein family that plays critical roles in the regulation of both innate and adaptive immune responses. The encoded protein may play a role in oxidative stress-mediated atherogenesis as well as monocyte adhesion. Multiple alternatively spliced transcript variants encoding different isoforms have been found for this gene. [provided by RefSeq, Aug 2013],



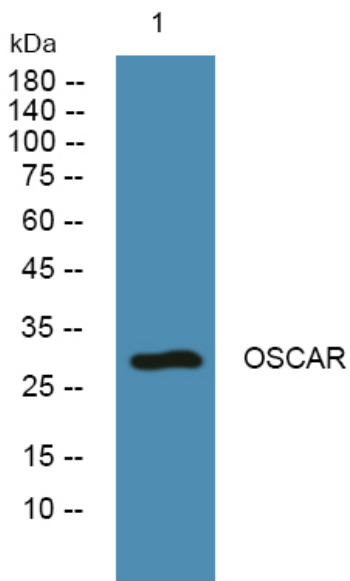
**matters needing attention**

Avoid repeated freezing and thawing!

**Usage suggestions**

This product can be used in immunological reaction related experiments. For more information, please consult technical personnel.

**Products Images**



Western blot analysis of lysates from K562 cells, primary antibody was diluted at 1:1000, 4° over night