



CLC4D Polyclonal Antibody

Catalog No	YP-Ab-07055
Isotype	IgG
Reactivity	Human;Rat;Mouse
Applications	WB;ELISA
Gene Name	CLEC4D CLECSF8 MCL
Protein Name	C-type lectin domain family 4 member D (C-type lectin superfamily member 8) (C-type lectin-like receptor 6) (CLEC-6)
Immunogen	Synthesized peptide derived from part region of human protein
Specificity	CLC4D Polyclonal Antibody detects endogenous levels of protein.
Formulation	Liquid in PBS containing 50% glycerol, and 0.02% sodium azide.
Source	Polyclonal, Rabbit,IgG
Purification	The antibody was affinity-purified from rabbit antiserum by affinity-chromatography using epitope-specific immunogen.
Dilution	WB 1:500-2000 ELISA 1:5000-20000
Concentration	1 mg/ml
Purity	≥90%
Storage Stability	-20°C/1 year
Synonyms	
Observed Band	23kD
Cell Pathway	Cell membrane ; Single-pass type II membrane protein .
Tissue Specificity	Expressed weakly in peripheral blood leukocytes, bone marrow and spleen. Expression is confined mostly in monocytes and macrophage and seems to be up-regulated by IL-6, IL-10, TNF-alpha and IFN-gamma.
Function	function:Functions as an endocytic receptor. May be involved in antigen uptake at the site of infection, either for clearance of the antigen, or for processing and further presentation to T cells.,induction:Induced by autocrine inflammatory stimuli.,online information:MCL,similarity:Contains 1 C-type lectin domain.,tissue specificity:Expressed weakly in peripheral blood leukocytes, bone marrow and spleen. Expression is confined mostly in monocytes and macrophage and seems to be up-regulated by IL-6, IL-10, TNF-alpha and IFN-gamma.,
Background	This gene encodes a member of the C-type lectin/C-type lectin-like domain (CTL/CTLD) superfamily. Members of this family share a common protein fold and have diverse functions, such as cell adhesion, cell-cell signalling, glycoprotein turnover, and roles in inflammation and immune response. This gene is closely linked to other CTL/CTLD superfamily members on chromosome 12p13 in the natural killer gene complex region. [provided by RefSeq, Jul 2008],



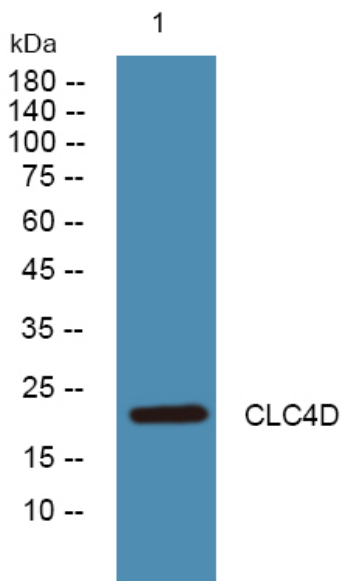
matters needing attention

Avoid repeated freezing and thawing!

Usage suggestions

This product can be used in immunological reaction related experiments. For more information, please consult technical personnel.

Products Images



Western blot analysis of lysates from U2OS cells, primary antibody was diluted at 1:1000, 4° over night