



# GFRA3 Polyclonal Antibody

<b>Catalog No</b>	YP-Ab-07060
<b>Isotype</b>	IgG
<b>Reactivity</b>	Human;Mouse
<b>Applications</b>	WB;ELISA
<b>Gene Name</b>	GFRA3 UNQ339/PRO538/PRO3664
<b>Protein Name</b>	GDNF family receptor alpha-3 (GDNF receptor alpha-3) (GDNFR-alpha-3) (GFR-alpha-3)
<b>Immunogen</b>	Synthesized peptide derived from part region of human protein
<b>Specificity</b>	GFRA3 Polyclonal Antibody detects endogenous levels of protein.
<b>Formulation</b>	Liquid in PBS containing 50% glycerol, and 0.02% sodium azide.
<b>Source</b>	Polyclonal, Rabbit,IgG
<b>Purification</b>	The antibody was affinity-purified from rabbit antiserum by affinity-chromatography using epitope-specific immunogen.
<b>Dilution</b>	WB 1:500-2000 ELISA 1:5000-20000
<b>Concentration</b>	1 mg/ml
<b>Purity</b>	≥90%
<b>Storage Stability</b>	-20°C/1 year
<b>Synonyms</b>	
<b>Observed Band</b>	44kD
<b>Cell Pathway</b>	Cell membrane; Lipid-anchor, GPI-anchor.
<b>Tissue Specificity</b>	Widely expressed in adult and fetus which exhibit a similar pattern. Essentially not expressed in the central nervous system, but highly expressed in several sensory and sympathetic ganglia of the peripheral nervous system. Moderate expression in many non-neuronal tissues, particularly those of the digestive and urogenital systems, but high expression in stomach and appendix. Several types of glandular tissues show low expression. Very low or no expression detected in the hematopoietic system.
<b>Function</b>	function:Receptor for the glial cell line-derived neurotrophic factor, ARTN (artemin). Mediates the artemin-induced autophosphorylation and activation of the RET receptor tyrosine kinase.,PTM:N-glycosylated.,similarity:Belongs to the GDNFR family.,tissue specificity:Widely expressed in adult and fetus which exhibit a similar pattern. Essentially not expressed in the central nervous system, but highly expressed in several sensory and sympathetic ganglia of the peripheral nervous system. Moderate expression in many non-neuronal tissues, particularly those of the digestive and urogenital systems, but high expression in stomach and appendix. Several types of glandular tissues show low expression. Very low or no expression detected in the hematopoietic system.,



**Background**

The protein encoded by this gene is a glycosylphosphatidylinositol(GPI)-linked cell surface receptor and a member of the GDNF receptor family. It forms a signaling receptor complex with RET tyrosine kinase receptor and binds the ligand, artemin. [provided by RefSeq, Jul 2008],

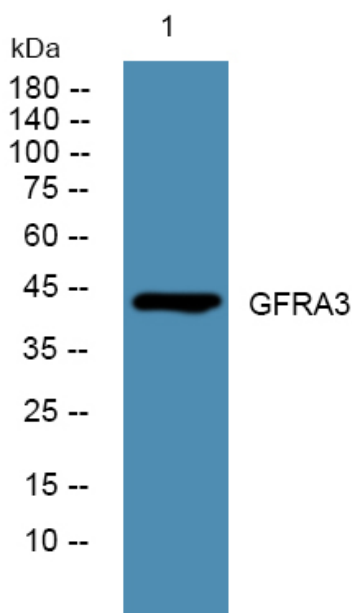
**matters needing attention**

Avoid repeated freezing and thawing!

**Usage suggestions**

This product can be used in immunological reaction related experiments. For more information, please consult technical personnel.

**Products Images**



Western blot analysis of lysates from KB cells, primary antibody was diluted at 1:1000, 4°over night