



# TSHB Polyclonal Antibody

<b>Catalog No</b>	YP-Ab-07079
<b>Isotype</b>	IgG
<b>Reactivity</b>	Human;Rat;Mouse
<b>Applications</b>	WB;ELISA
<b>Gene Name</b>	TSHB
<b>Protein Name</b>	Thyrotropin subunit beta (Thyroid-stimulating hormone subunit beta) (TSH-B) (TSH-beta) (Thyrotropin beta chain) (Thyrotropin alfa)
<b>Immunogen</b>	Synthesized peptide derived from part region of human protein
<b>Specificity</b>	TSHB Polyclonal Antibody detects endogenous levels of protein.
<b>Formulation</b>	Liquid in PBS containing 50% glycerol, and 0.02% sodium azide.
<b>Source</b>	Polyclonal, Rabbit,IgG
<b>Purification</b>	The antibody was affinity-purified from rabbit antiserum by affinity-chromatography using epitope-specific immunogen.
<b>Dilution</b>	WB 1:500-2000 ELISA 1:5000-20000
<b>Concentration</b>	1 mg/ml
<b>Purity</b>	≥90%
<b>Storage Stability</b>	-20°C/1 year
<b>Synonyms</b>	
<b>Observed Band</b>	15kD
<b>Cell Pathway</b>	Secreted.
<b>Tissue Specificity</b>	
<b>Function</b>	function:Indispensable for the control of thyroid structure and metabolism.,online information:Clinical information on Thyrogen,online information:Thyroid-stimulating hormone entry,pharmaceutical:Available under the name Thyrogen (Genzyme). Used in combination with other tests to detect recurring or leftover thyroid cancer cells in patients with a history of certain types of thyroid cancer.,similarity:Belongs to the glycoprotein hormones subunit beta family.,subunit:Heterodimer of a common alpha chain and a unique beta chain which confers biological specificity to thyrotropin, lutropin, follitropin and gonadotropin.,
<b>Background</b>	The four human glycoprotein hormones chorionic gonadotropin (CG), luteinizing hormone (LH), follicle stimulating hormone (FSH), and thyroid stimulating hormone (TSH) are dimers consisting of alpha and beta subunits that are associated noncovalently. The alpha subunits of these hormones are identical, however, their beta chains are unique and confer biological specificity. Thyroid stimulating hormone functions in the control of thyroid structure and metabolism.



The protein encoded by this gene is the beta subunit of thyroid stimulating hormone. Mutations in this gene are associated with congenital central and secondary hypothyroidism and Hashimoto's thyroiditis. Alternative splicing of this gene results in multiple transcript variants. [provided by RefSeq, May 2013],

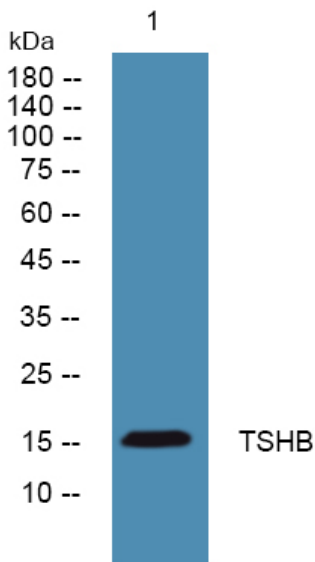
**matters needing attention**

Avoid repeated freezing and thawing!

**Usage suggestions**

This product can be used in immunological reaction related experiments. For more information, please consult technical personnel.

**Products Images**



Western blot analysis of lysates from K562 cells, primary antibody was diluted at 1:1000, 4°over night