



LUM Polyclonal Antibody

Catalog No	YP-Ab-07096
Isotype	IgG
Reactivity	Human;Rat;Mouse
Applications	WB;ELISA
Gene Name	LUM LDC SLRR2D
Protein Name	Lumican (Keratan sulfate proteoglycan lumican) (KSPG lumican)
Immunogen	Synthesized peptide derived from human protein . at AA range: 30-110
Specificity	LUM Polyclonal Antibody detects endogenous levels of protein.
Formulation	Liquid in PBS containing 50% glycerol, and 0.02% sodium azide.
Source	Polyclonal, Rabbit,IgG
Purification	The antibody was affinity-purified from rabbit antiserum by affinity-chromatography using epitope-specific immunogen.
Dilution	WB 1:500-2000 ELISA 1:5000-20000
Concentration	1 mg/ml
Purity	≥90%
Storage Stability	-20°C/1 year
Synonyms	
Observed Band	37kD
Cell Pathway	Secreted, extracellular space, extracellular matrix .
Tissue Specificity	Cornea and other tissues.
Function	developmental stage:Present in the extracellular matrix of human articular cartilage at all ages, although its abundance is far greater in the adult. In the adult cartilage lumican exists predominantly in a glycoprotein form lacking keratan sulfate, whereas the juvenile form of the molecule is a proteoglycan.,PTM:Sulfated on tyrosine residue(s).,similarity:Belongs to the small leucine-rich proteoglycan (SLRP) family. Class II subfamily.,similarity:Contains 12 LRR (leucine-rich) repeats.,subunit:Binds to laminin.,tissue specificity:Cornea and other tissues.,
Background	This gene encodes a member of the small leucine-rich proteoglycan (SLRP) family that includes decorin, biglycan, fibromodulin, keratocan, epiphycan, and osteoglycin. In these bifunctional molecules, the protein moiety binds collagen fibrils and the highly charged hydrophilic glycosaminoglycans regulate interfibrillar spacings. Lumican is the major keratan sulfate proteoglycan of the cornea but is also distributed in interstitial collagenous matrices throughout the body. Lumican may regulate collagen fibril organization and circumferential growth, corneal



transparency, and epithelial cell migration and tissue repair. [provided by RefSeq, Jul 2008],

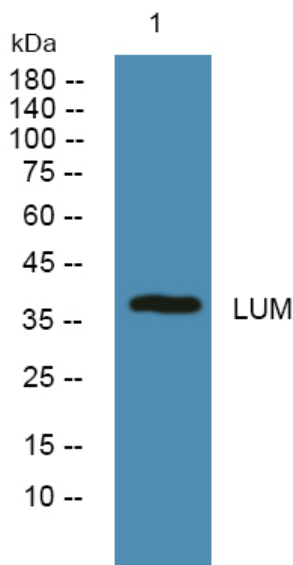
matters needing attention

Avoid repeated freezing and thawing!

Usage suggestions

This product can be used in immunological reaction related experiments. For more information, please consult technical personnel.

Products Images



Western blot analysis of lysates from PC12 cells, primary antibody was diluted at 1:1000, 4° over night