



# STAB2 Polyclonal Antibody

<b>Catalog No</b>	YP-Ab-07117
<b>Isotype</b>	IgG
<b>Reactivity</b>	Human;Rat;Mouse
<b>Applications</b>	IHC;IF
<b>Gene Name</b>	STAB2 FEEL2 FELL FEX2 HARE
<b>Protein Name</b>	Stabilin-2 (FAS1 EGF-like and X-link domain-containing adhesion molecule 2) (Fasciclin, EGF-like, laminin-type EGF-like and link domain-containing scavenger receptor 2) (FEEL-2) (Hyaluronan receptor f
<b>Immunogen</b>	Synthesized peptide derived from human protein . at AA range: 980-1060
<b>Specificity</b>	STAB2 Polyclonal Antibody detects endogenous levels of protein.
<b>Formulation</b>	Liquid in PBS containing 50% glycerol, and 0.02% sodium azide.
<b>Source</b>	Polyclonal, Rabbit,IgG
<b>Purification</b>	The antibody was affinity-purified from rabbit antiserum by affinity-chromatography using epitope-specific immunogen.
<b>Dilution</b>	IHC-p 1:50-300 IF 1:100-300 Not yet tested in other applications.
<b>Concentration</b>	1 mg/ml
<b>Purity</b>	≥90%
<b>Storage Stability</b>	-20°C/1 year
<b>Synonyms</b>	
<b>Observed Band</b>	280kD
<b>Cell Pathway</b>	Cell membrane ; Single-pass type I membrane protein . Cytoplasm . Only a small amount appears to be present at the cell surface (PubMed:17145755).
<b>Tissue Specificity</b>	Highly expressed in sinusoidal endothelial cells of liver, spleen and lymph nodes. Also expressed in non SEC-cells such as HMDMs (monocyte-derived macrophages), HAMs (T-cell leukemia virus type 1-associated myelopathy), and several macrophage cell line.
<b>Function</b>	domain:Recognizes phosphatidyl serine via its epidermal growth factor-like domains.,function:Phosphatidylserine receptor that enhances the engulfment of apoptotic cells. Hyaluronan receptor that binds to and mediates endocytosis of hyaluronic acid. May serve to maintain tissue integrity by supporting extracellular matrix turnover or it may contribute to maintaining fluidity of bodily liquids by resorption of hyaluronan. Binds to both Gram-positive and Gram-negative bacteria and may play a role in defense against bacterial infection. Bona fide phosphatidyl serine receptor for cell corpse clearance in macrophages.,PTM:Proteolytically processed to yield a 190 kDa protein.,similarity:Contains 1 Link domain.,similarity:Contains 17 EGF-like domains.,similarity:Contains 2 laminin EGF-like domains.,similarity:Contains 7 FAS1 domains.,subunit:Interacts with GULP1.,tissue specificity:Highly expres

**Background**

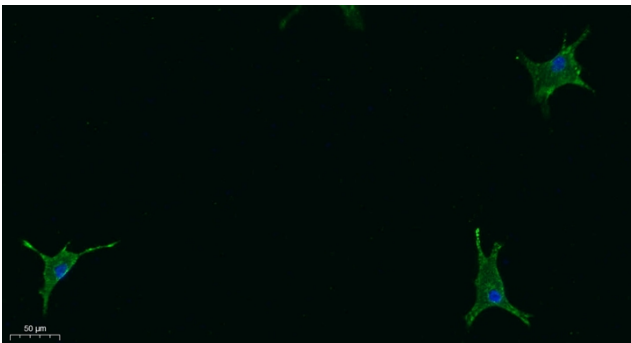
This gene encodes a large, transmembrane receptor protein which may function in angiogenesis, lymphocyte homing, cell adhesion, or receptor scavenging. The protein contains 7 fasciclin, 15 epidermal growth factor (EGF)-like, and 2 laminin-type EGF-like domains as well as a C-type lectin-like hyaluronan-binding Link module. The protein is primarily expressed on sinusoidal endothelial cells of liver, spleen, and lymph node. The receptor has been shown to bind and endocytose ligands such as hyaluronan, low density lipoprotein, Gram-positive and Gram-negative bacteria, and advanced glycosylation end products. Supporting its possible role as a scavenger receptor, the protein has been shown to cycle between the plasma membrane and lysosomes. [provided by RefSeq, Jul 2008],

**matters needing attention**

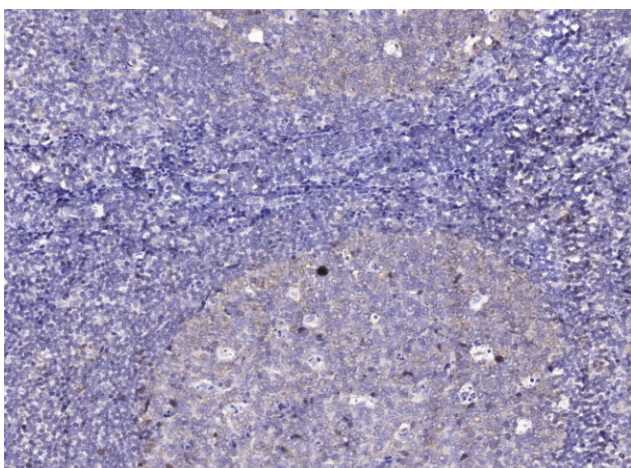
Avoid repeated freezing and thawing!

**Usage suggestions**

This product can be used in immunological reaction related experiments. For more information, please consult technical personnel.

**Products Images**

Immunofluorescence analysis of A549. 1,primary Antibody was diluted at 1:200(4°C overnight). 2, Goat Anti Rabbit IgG (H&L) - Alexa Fluor 488 Secondary antibody was diluted at 1:1000(room temperature, 50min).3, Picture B: DAPI(blue) 10min.



Immunohistochemical analysis of paraffin-embedded human tonsil. 1, Tris-EDTA,pH9.0 was used for antigen retrieval. 2 Antibody was diluted at 1:200(4°C overnight).3,Secondary antibody was diluted at 1:200(room temperature, 45min).